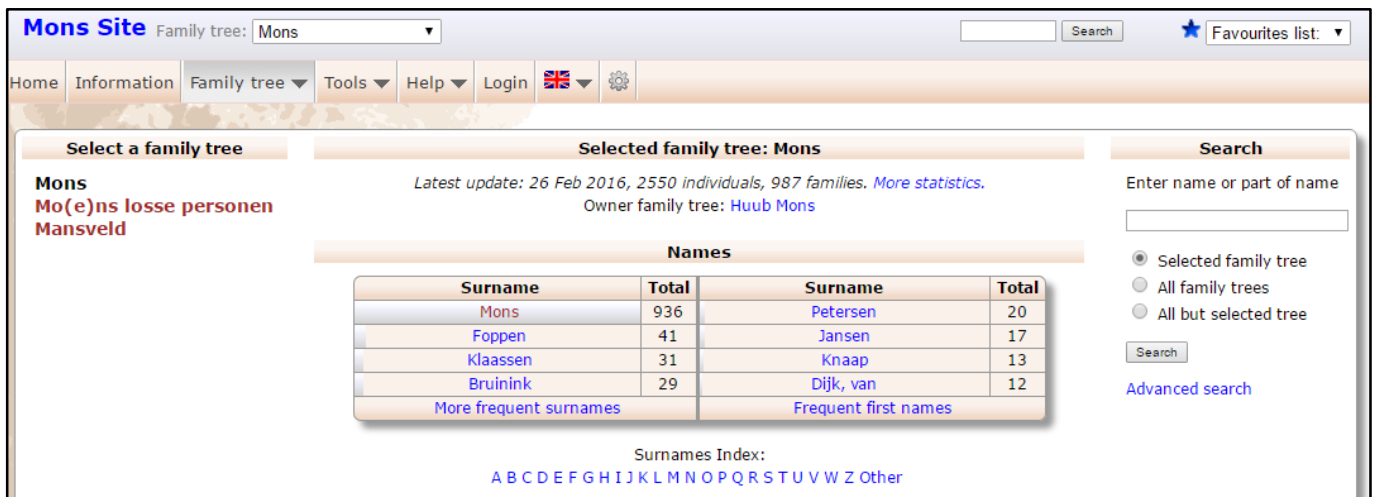


HuMo-gen manual

Manual for the HuMo-gen freeware web-based genealogical program. Version 10 jul 2016.

Written by Huub Mons & Yossi Beck.



HuMo-gen software/ forum/ download links

There are 2 official HuMo-gen websites:

1. English/ Dutch HuMo-gen website (by Huub Mons): www.humo-gen.com
 2. International HuMo-gen website (by Yossi Beck): www.humogen.com
- HuMo-gen DOWNLOAD: sourceforge.net/projects/humo-gen
 - HuMo-gen FORUM: www.humo-gen.com/genforum
 - HuMo-gen websites (examples): <http://www.humo-gen.com/genforum/viewforum.php?f=12>
 - HuMo-gen test and demo website: www.humo-gen.com including demo of sources, addresses and pictures.

Quick installation guide

HuMo-gen is a web-based genealogy program. HuMo-gen can be installed at a (free or paid) webhost that supports PHP and MySQL, Windows PC, Linux PC, etc. It is designed for use at internet. You need a web server (at internet or at your pc) to use this program.

Quick installation guide (extended guide can be found in this manual):

- 1) Download HuMo-gen zip file (Sourceforge: <https://sourceforge.net/projects/humo-gen/files>)
- 2) Unpack HuMo-gen zip package
- 3) Upload HuMo-gen files to your provider using FTP, we recommend using a sub folder like: humo-gen or genealogy
- 4) Open your browser and go to: www.yourwebsite/humo-gen
- 5) Further installation instructions (connect to a MySQL database) will be shown.

Go to page: [Installation](#) for full installation instructions, and installation at PC etc.

Index

[HuMo-gen software/ forum/ download links](#)

[Quick installation guide](#)

[Index](#)

[Installation](#)

[Important notes for installation](#)

[Installation options](#)

[Installation of HuMo-gen with an internet provider](#)

[Installation of HuMo-gen with internet provider Lycos](#)

[Installation of HuMo-gen on your own \(local\) PC with XAMPP-lite](#)

[Start HuMo-gen and first settings](#)

[Installation of database tables](#)

[HuMo-gen administration screen](#)

[HuMo-gen update](#)

[Automatically update method \(HuMo-gen version > 4.8.5\)](#)

[Manual update method 1](#)

[Manual update method 2](#)

[Update problems](#)

[Settings administration menu](#)

[Pictures/ media](#)

[Example 1 setting a picture path](#)

[Example 2 settings picture path](#)

[Example 3 settings picture path](#)

[Settings per user group](#)

[Add pictures](#)

[Generate thumbnails](#)

[Picture problems](#)

[Error message](#)

[Users and User groups](#)

[What are Users and Groups?](#)

[Standard Users and Groups](#)

[Adding and changing Users and Groups](#)

[Setting family trees by Group](#)

[Editor](#)

[Google Maps](#)

[Admin options](#)

[Obtain and activate a Google API Key](#)

[Create/ update Location database](#)

[Edit location database](#)

[Deleting the entire location table](#)

[End-user interface](#)

[The menu](#)

[The map](#)

[CSS Layout](#)

[Settings for the BODY tag](#)

[Alignment of the person index \(person list\)](#)

[Size of pictures](#)

[Configuration Files](#)

[Privacy filter](#)

[Privacy settings per user group](#)

[Privacy settings per family tree](#)

[Gendex](#)

[Several items](#)

[Mail form](#)

[Skins/ styles](#)

[Links with sources and text](#)

[Country visitor statistics, HuMo-gen add-on](#)

[Tables](#)

[Fan chart](#)

[Language files](#)

[Use a link to change the language](#)

[Birthday RSS feed](#)

[Creating/ removing Timeline files](#)

[Removing certain or all timeline history files](#)

[Adding your own timeline files](#)

[Adding links to a timeline file](#)

[Changing default steps \(periods\)](#)

[Changing default timeline](#)

[Changing the looks of the timeline report \(for more advanced users\)](#)

[Cookie management](#)

[HuMo-gen cookies](#)

[Cookies added to HuMo-gen by the webmaster of a site](#)

[PHPMyAdmin](#)

[HuMo-gen database backup](#)

[HuMo-gen database restore](#)

[Change database field size](#)

[Securing the db_login.php file \(by Yossi Beck\)](#)

[Google index](#)

[Introduction](#)

[How does Google affect HuMo-gen](#)

[1st effect: HuMo-gen Statistics](#)

[2nd effect: Large data transfer from your site](#)

[Use of a robots.txt file](#)

[Solutions?](#)

[HuMo-gen known problems](#)

[General information](#)

[Style problems](#)

[Large gedcom files](#)

[Read gedcom file](#)

[Editor](#)

[PDF Export](#)

[Calculated and estimated dates](#)

Installation

HuMo-gen can be installed in several ways. The most common use is installation with a (free or paid) web host (provider) that supports PHP and MySQL. It is also possible to install HuMo-gen on a local PC (mainly for testing purposes).

Important notes for installation

- HuMo-gen works best under PHP 5.0 or more recent PHP version. If you use a lower version, some functions will not work.
- PDF export will not work if PHP is in "safe mode". Anyway "safe mode" won't exist anymore from PHP 6.0.
- New HuMo-gen versions (version 4.7 and higher, after new installation of tables):
 - The default admin username is: **admin**
 - The default admin password is: **humogen**
- Old HuMo-gen versions (version 4.6.4 and lower):
 - The default admin username is: **beheer** (Dutch for administration).
 - The default admin password is: **humogen**

Installation options

The basic steps for installation are as follows:

- 1) Download HuMo-gen (Sourceforge: <https://sourceforge.net/projects/humo-gen/files>)
- 2) Unzip the package in a new folder that you may name humo-gen or genealogy or any other name you fancy (in this manual we will use humo-gen for the folder name. If you choose another name change the paths below accordingly).
- 3a) If you install with a webhost, copy the folder you just created with its contents to the www folder of your server (sometimes called public_html). Now open your browser, go to: www.your_website.com/humo-gen/admin and follow instructions.
- 3b) If you install on your own PC with XAMPP, copy your humo-gen folder to the "htdocs" folder of XAMPP. Now open your browser, go to: localhost/humo-gen/admin or for Windows 10: localhost:8080/humo-gen/admin and follow instructions.

Installation of HuMo-gen with an internet provider

- 1) Unzip the Humo-gen.zip file into a new directory on your PC. We suggest you name this new folder "humo-gen" or "genealogy". We will use "humo-gen" for the examples in the manual.
- 2) *OPTIONAL [You can skip step 2 if you are using a version after 4.8.1. In that case continue to step 3] In the humo-gen folder you created on your PC, in the file "include/db_login.php", replace only the bold words in following lines with your details:*

```
define("DATABASE_HOST", "DATABASE_HOST");  
define("DATABASE_USERNAME", "USERNAME");  
define("DATABASE_PASSWORD", "PASSWORD");  
define("DATABASE_NAME", "DATABASE_NAME");
```

The DATABASE_HOST, USERNAME, PASSWORD and DATABASE-NAME will be given by your provider or if you have access to your site's control panel, you can create them using Mysql tools of the control panel.

- 3) Now use a FTP program (such as Filezilla) to upload the folder humo-gen with its content to your server into the www folder (sometimes called public_html).
- 4) In your browser (such as: Internet Explorer, Chrome or Firefox) open: your-website/humo-gen/admin/

Now follow further instruction of: [Installation of HuMo-gen](#)

With some American hosting providers (such as Bluehost.com) the values for DATABASE_USERNAME and

HuMo-gen a freeware web-based genealogical program.

`DATABASE_NAME` have to be preceded by the username of your control panel. For example if the values of these two entries above are: "myusername" and "mydatabase" and the username of your control panel is "mycontrol", then the values that have to be entered are: "mycontrol_myusername" and "mycontrol_mydatabase".

With some providers it's needed to change the `.htaccess` file to activate the newest PHP version:

For provider **Hosting2go**, add this line to the `.htaccess` file (see: <http://www.hosting2go.nl/php5info>):
`AddHandler x-httpd-php5 .php`

For provider **STRATO**, add this line to the `.htaccess` file:
`AddType application/x-httpd-php5 .php`

For provider **Tsohost**, add this line to `php.ini`:
`session.save_path = /tmp/php_sessions`

Installation of HuMo-gen with internet provider Lycos

Go to: <http://www.tripod.lycos.nl>. (Or any other international site of Lycos)

Open an account with Tripod-Lycos, and select "free homepage".

TIP: your username will be part of the URL.

Your homepage is now: <http://members.lycos.nl/your-user-name/>

On the free homepage, select: PHP4U and activate it.

Write down the name of the database, for example: your-user-name_nl_db

[SKIP this step in HuMo-gen version 4.8.1 and higher]

For internet provider Lycos ONLY change the following lines in the file "include/db_login.php":

```
define("DATABASE_HOST", "localhost");  
define("DATABASE_USERNAME", "USERNAME");  
define("DATABASE_PASSWORD", "");  
define("DATABASE_NAME", "your_user_name_nl_db");
```

Using FTP (i.e. click WebFTP in Lycos) copy the php files to tripod-lycos.

Now start: <http://members.lycos.nl/your-user-name/>

It may be useful to place these files in a separate folder, i.e. humo-gen or genealogy.

In this case start: <http://members.lycos.nl/your-user-name/humo-gen/>

In your browser (Internet Explorer or Firefox) open: <http://www.website-naam/humo-gen/admin/>

Now follow further instruction of page: [Start HuMo-gen and first settings](#)

Installation of HuMo-gen on your own (local) PC with XAMPP-lite

Though HuMo-gen is meant primarily for publishing your genealogy data on the internet, it is advisable to make an installation on your local PC as well for testing new versions of HuMo-gen or to try out alterations you may wish to make in the program.

In order to be able to watch and test the database on your own PC, first several programs have to be installed:

- A web server (for example Apache)
- A MySQL server (the database server)
- A PHP program.

For most users, installing and setting up those programs would be quite a tedious job.

Fortunately there are simple free programs that simulate a triple setup of Apache, PHP and mySQL and allow you to run HuMo-gen (and other server-side programs) as if they were run from a web server.

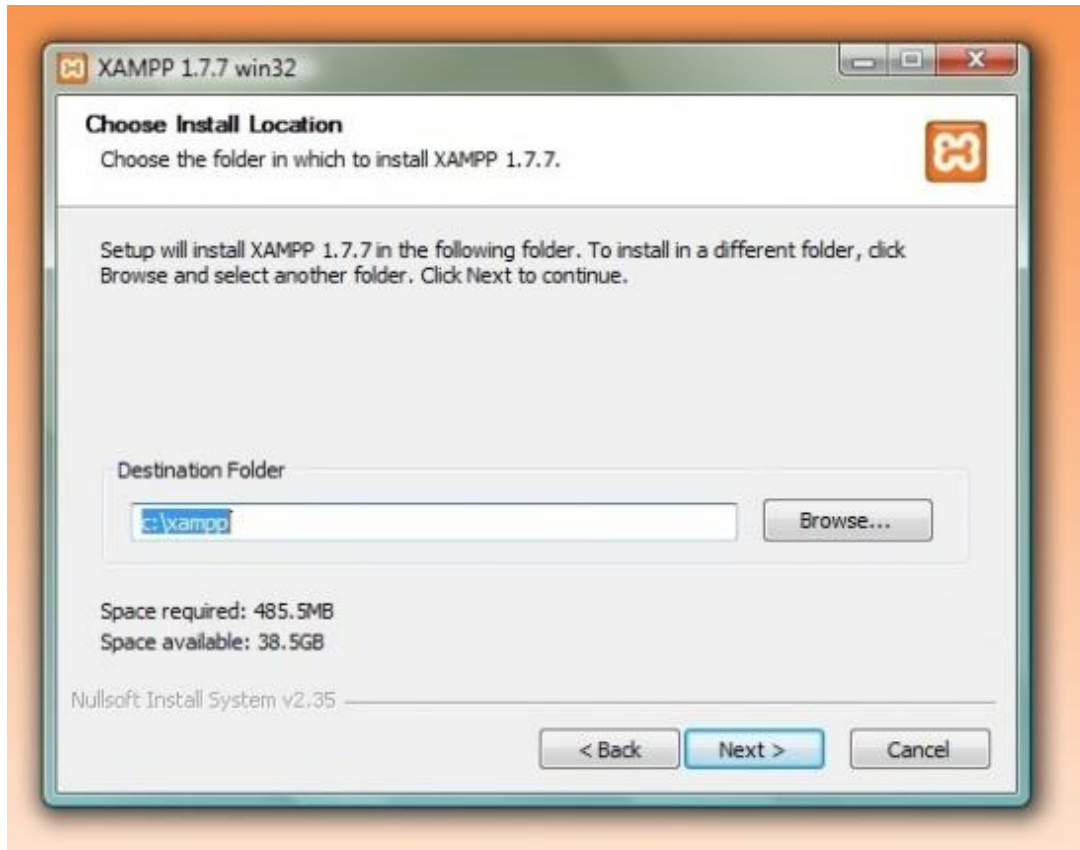
We suggest you use XAMPP, which is one of the more renowned free programs that offer a simple one-in-all solutions for server, PHP and MySQL simulation. XAMPP can be downloaded from www.apachefriends.org/en/xampp-windows.html

The portable version of XAMPP can be found here: <https://sourceforge.net/projects/xampp/>

HuMo-gen a freeware web-based genealogical program.

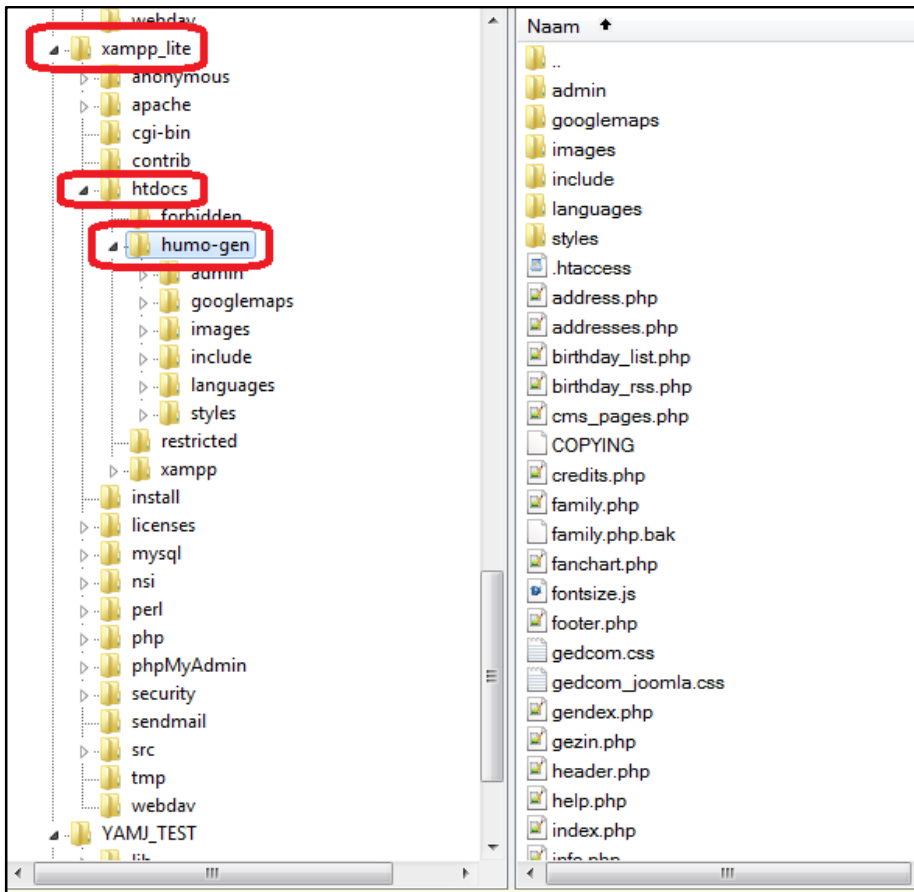
The following instructions assume that you install XAMPP on your hard disk on a Windows platform. Download the XAMPP and save it anywhere on your disk. Go to the place where you saved the downloaded file and double-click it.

On the installation screen make sure you install into C:\xampp (installing in C:\Program Files\xampp can cause privileges problems in Vista and Windows7).



Press "Install". An xampp folder will be created in C:\. Wait for all the files to be extracted, which may take a while.

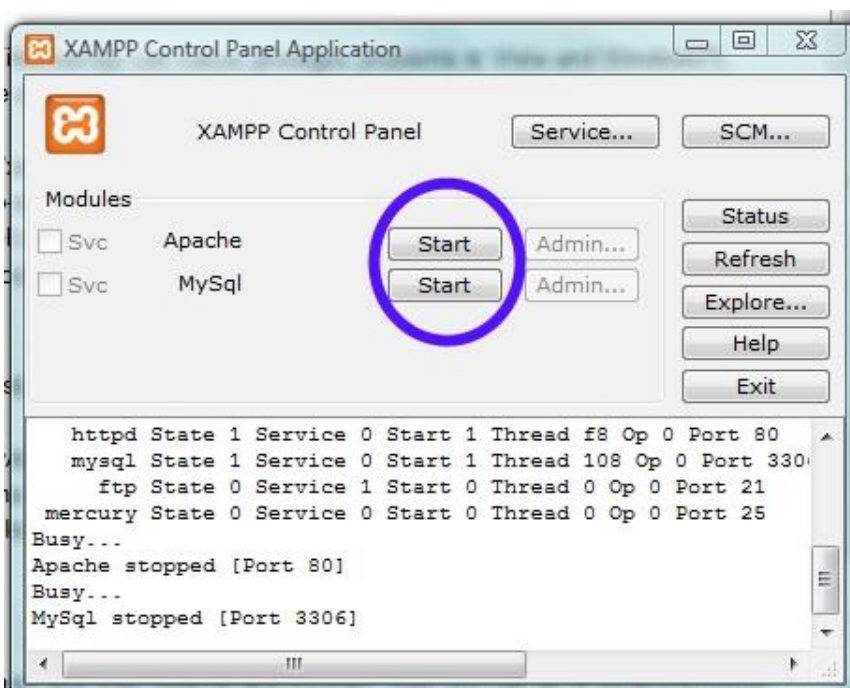
Install the HuMo-gen files in htdocs folder.



Now we have to start the XAMPP control panel.

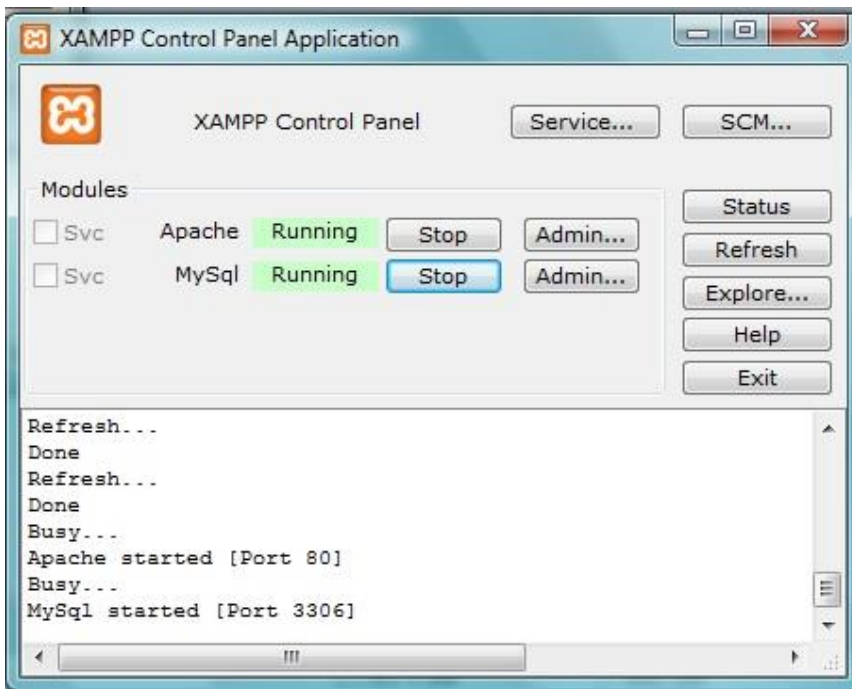
If there is a XAMPP icon on your desktop you can start the control panel with that. If there is no XAMPP icon (portable version), go to the "C:\xampp" folder and towards the bottom of the files you will find "xampp-control.exe". Double-clicking this will start the control panel. You may wish to make a shortcut to this file on your desktop for easier access next time. (Don't use the xampp-start.exe and stop files, they are meant for command line use).

In the XAMPP control panel click the "start" button to the right of "Apache".



HuMo-gen a freeware web-based genealogical program.

After a few seconds, if all went well, the start button should have changed to a "stop" button and "running" should appear in green next to it. Repeat the same for mySQL. Should be running too now.



Now hit the "Admin" button next to "Apache". Choose "English". On the webpage that opens up - choose "status" on the menu to the left.



If all is well, the top 5 items are activated. According to the version, you may have some more non-activated items but that is fine. For HuMo-gen MySQL database and PHP must be activated.

OPTIONAL:

[REMARK: this step can be skipped if you generate a database in HuMo-gen] Return to the XAMPP control panel. Hit the "Admin" button next to "MySQL". This should display the phpMyAdmin web page.

In the phpMyAdmin screen you can make up your mySQL database. Pick the "databases" tab from the top menu and in the "create new database" box enter a name of your liking. I strongly suggest you call your new database "huMo-gen", which is the default database name already included in HuMo-gen, so you won't have to change that later.



If you choose any other name, we will let you know where to adjust that further on. Hit the "Create" button. Finished. You can close the page or just leave it.

Now follow further instruction of page: [Start HuMo-gen and first settings](#)

REMEMBER: Each time you want to run HuMo-gen on your local PC you have to first open the XAMPP control panel and start Apache and mySQL! Then you can go to localhost/humo-gen or localhost/humo-gen/admin as explained above.

Other settings for XAMPP:

In Windows 10 port 80 isn't standard available. It's better to use port 8080.

In file Apache httpd.conf, check these settings:

Listen 8080

ServerName localhost:8080

Use this link to start HuMo-gen:

<http://localhost:8080/humo-gen/index.php>

It's possible to change the time out setting in: xampp/php/php.ini:

; Maximum execution time of each script, in seconds

; http://php.net/max-execution-time

; Note: This directive is hardcoded to 0 for the CLI SAPI

max_execution_time=300

Start HuMo-gen and first settings

This is the second step to install HuMo-gen. If the HuMo-gen files are copied to the server, you can open your web browser (such as: Internet Explorer, Google Chrome or Firefox), and open HuMo-gen.

Normally you need these links:

If you are using a hosting provider: www.your_website/humo-gen/admin

If your are using Xampp at a local pc: localhost/humo-gen/admin or localhost:8080/humo-gen/admin

You will see this screen:

Administration			
HuMo-gen status			
PHP Version	PHP Version: 5.4.30		
Database	There is no database connection! To connect the MySQL database to HuMo-gen, fill in these settings:		
	Database setting	Database value	Example website provider
	Database host	<input type="text" value="localhost"/>	localhost
	Database username	<input type="text" value="root"/>	database_username
	Database password	<input type="text"/>	database_password
	Database name	<input type="text" value="humo-gen"/>	database_name
	At a local PC also install database	<input type="checkbox"/> YES, also install database	NO
Save settings and connect to database	<input type="button" value="SAVE"/>		

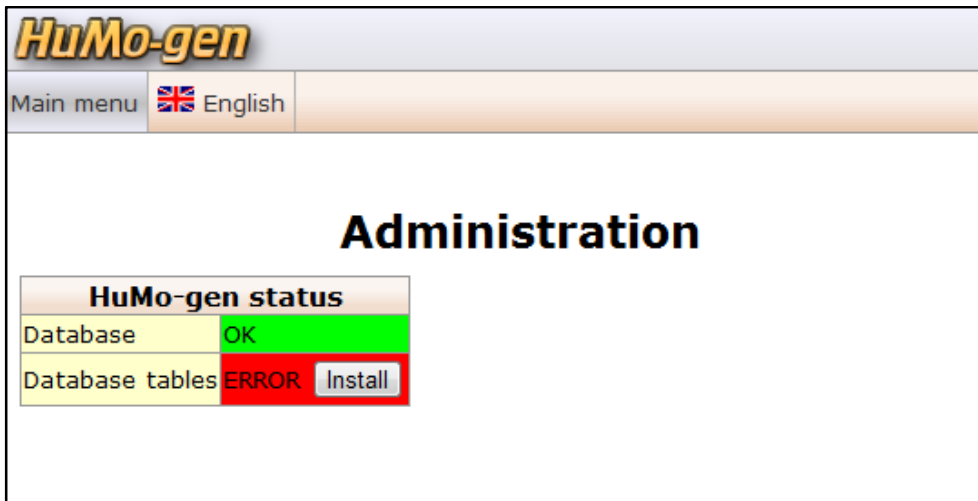
Add these settings: Database host, Database username, Database password, Database name. (Examples for a webhost environment and PC setup are given next to the entry fields).

The DATABASE_HOST, USERNAME, PASSWORD and DATABASE-NAME will be given by your provider or if you have access to your site's control panel, you may have created them yourself using Mysql tools of the control panel.


With some American hosting providers (such as Bluehost.com) the values for DATABASE_USERNAME and DATABASE_NAME have to be preceded by the username of your control panel. For example if the values of these two entries above are: "myusername" and "mydatabase" and the username of your control panel is "mycontrol", then the values that have to be entered are: "mycontrol_myusername" and "mycontrol_mydatabase".

(ONLY when installing at a local PC use the select box to install a database. Don't use this when installing with a hosting provider).

Click "SAVE". If the database connection is successful, you will see this screen:



HuMo-gen

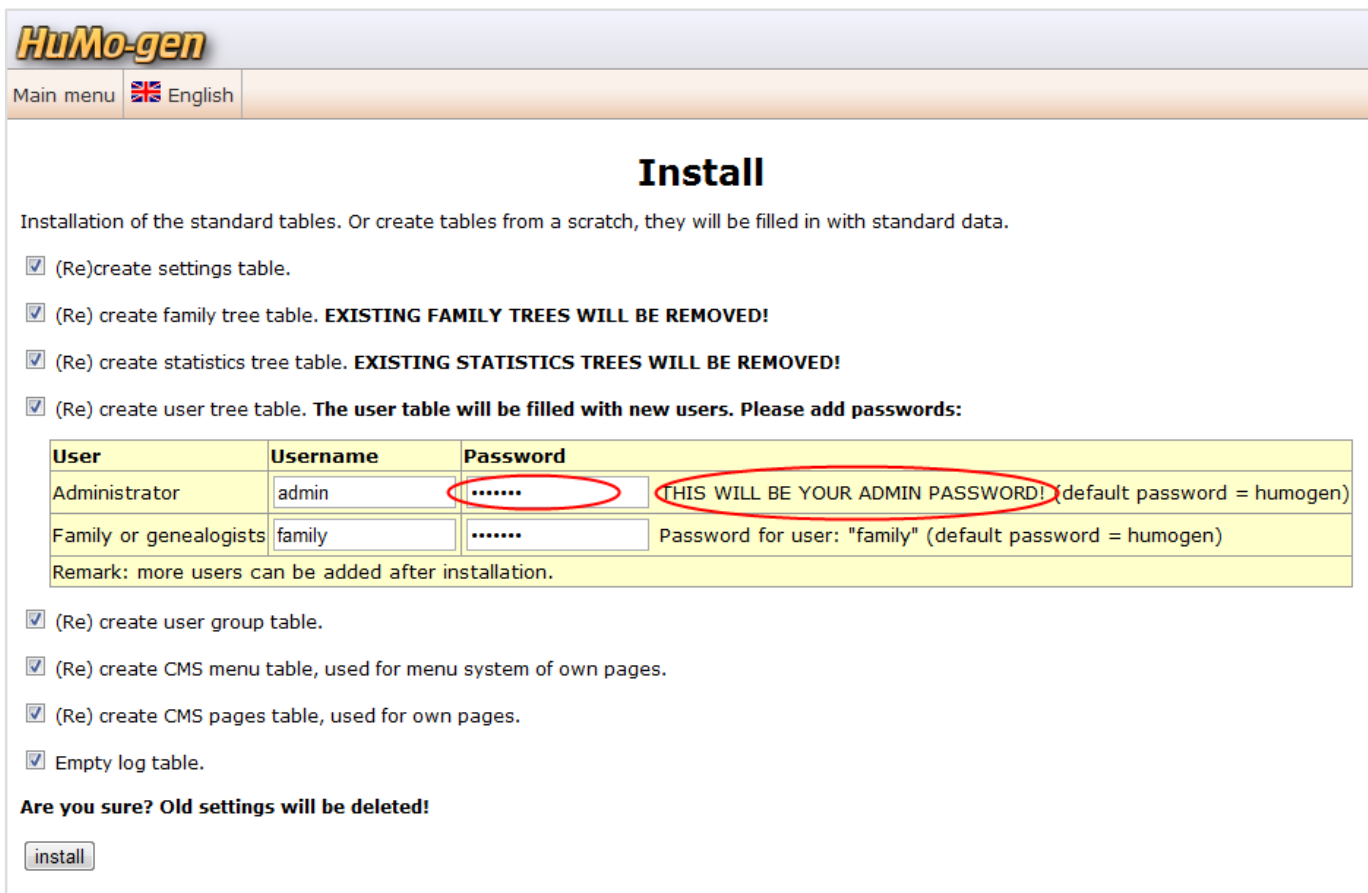
Main menu  English

Administration


HuMo-gen status	
Database	OK
Database tables	ERROR Install

Installation of database tables

You will see this screen:



HuMo-gen

Main menu  English

Install

Installation of the standard tables. Or create tables from a scratch, they will be filled in with standard data.

- ☒ (Re)create settings table.
- ☒ (Re) create family tree table. **EXISTING FAMILY TREES WILL BE REMOVED!**
- ☒ (Re) create statistics tree table. **EXISTING STATISTICS TREES WILL BE REMOVED!**
- ☒ (Re) create user tree table. **The user table will be filled with new users. Please add passwords:**

User	Username	Password
Administrator	admin THIS WILL BE YOUR ADMIN PASSWORD! (default password = humogen)
Family or genealogists	family Password for user: "family" (default password = humogen)

Remark: more users can be added after installation.

- ☒ (Re) create user group table.
- ☒ (Re) create CMS menu table, used for menu system of own pages.
- ☒ (Re) create CMS pages table, used for own pages.
- ☒ Empty log table.

Are you sure? Old settings will be deleted!

[install](#)

Add your administrator username and password in this screen. If you don't do this, the username will be "admin" and password will be "humogen".

It's possible to change the username and password later.

Now click "install" and "yes".

HuMo-gen

Main menuFamily treesEnglish

Install

Installation of the standard tables. Or create tables from a scratch, they will be filled in with standard data.

Creating tables:
creating humo_settings...
fill humo_settings... **Standard settings are saved in database!**
creating humo_trees
creating humo_trees
Install statistics table...
creating humo_groups...
filling humo_groups...
creating humo_users...
filling humo_users...
creating humo_cms_menu...
creating humo_cms_pages...
creating humo_log...
No errors above? This means that the database has been processed!

Click "Main menu". You have to log in using your administrator username and password.

HuMo-gen administration screen

After log-in you will see the HuMo-gen administration screen:

HuMo-gen

Main menuControlFamily treesUsersCMS Own pagesDatabase backupLogsEnglish

Administration

HuMo-gen status	
Database	OK
Database tables	OK
Login control	At the moment you are logged in through PHP-MySQL. INFO
register_globals	OK (option is OFF)
magic_quotes_gpc	UNSAFE (option is OFF) change this option in .htaccess file or put: "magic_quotes_gpc = On" in the php.ini file.
display_errors	UNSAFE (option is ON) change this option in .htaccess file.
Trees table	OK
Status tree 1	NO NAME This tree does not yet contain any data or has not been imported properly! Import Gedcom file

TIPS:

- Administrate one or more trees: go to "Family Trees"
- Import Gedcom file: in menu under "Family trees"

Not everything can be changed here:

- The layout of HuMo-gen (style sheet) can be changed in: gedcom.css
- Prefixes for family names can be changed in: prefixes.php

Now it's possible to start your family tree by entering data, or import a gedcom file from your genealogical program.

On the lower red box press the "import Gedcom" button. On the next screen hit "Browse" and find the Gedcom file you want

HuMo-gen a freeware web-based genealogical program.

to use for your site (you can add more later on if needed). Choose it. You will be told the file was "uploaded" successfully.

Hit "step 2" - the tables are filled in.

Hit "Step 3" - The Gedcom file will be read in with a progress bar.

Hit "Step 4". You're ready. You can either use the "index.php" link that's waiting for you there, or enter the full URL localhost/humo-gen in your browser. You will see the default front page of your new website as it would look on the web.

You can go back to the admin page localhost/humo-gen/admin to enter general details for your site under "Settings", import additional Gedcoms under "Family Tree" or enter descriptions, links etc. for each tree in 4 languages.

To update a gedcom file, you only have to do this:

- Open the administration screen in your browser:
- Click on "Family Trees"
- Select "Family Tree Data next to the tree you want to update.
- Hit "Import Gedcom" and choose your updated Gedcom file.

HuMo-gen update

There are 2 update methods: automatically and manually.

Automatically update method (HuMo-gen version > 4.8.5)

If you are using a HuMo-gen version < 4.8.6 then there is no automatically update build in.

The automatically update needs to download new HuMo-gen files and unzip them. Unfortunately some providers don't allow these options due to safety reasons.

Go to the admin screen.

- In the top of the admin screen there will be a message, of a new version available, OR you can click the "update option" to do a check for the latest HuMo-gen beta version.
- Now you can start the update procedure by clicking: "Start automatically update."
- STEP 1) Download and unzip new HuMo-gen version [should be safe to do, no changes made yet].
- STEP 2) Check files [should be safe to do, no changes made yet].
- STEP 3) Install files [this will install new files, and overwrite existing files!].

Manual update method 1

- 1) Create a new folder, for example: humo-gen2
- 2) Install the new HuMo-gen version in the new folder.
- 3) Copy the file db_login.php from the old map to the new folder.
- 4) Now you can test the new version

Sometimes a database update will be done, it's possible the old version doesn't work anymore!

You can test using this link: http://www.name_of_your_website/humo-gen2

- 5) If the new version worked: delete or rename the old folder
- 6) Rename the folder humo-gen2 to humo-gen (or the name of the old version)

Manual update method 2

Normal procedure for a HuMo-gen update:

- 1) If you want, make a backup of the file: db_login.php
- 2) Replace all files (normally you can leave the file db_login.php)
- 3) Import the gedcom file(s) again.

Update problems

Try the next steps one-by-one if HuMo-gen does not work properly after an update:

1. Go to the administration menu and select "import gedcom", and re-import the gedcom file(s).
2. Go to the administration menu and select "install", and reinstall the tables. Unfortunately all previous settings will be gone...

When you encounter other problems on your site: reload the HuMo-gen page or remove the cookies from your PC, that may help!

Settings administration menu

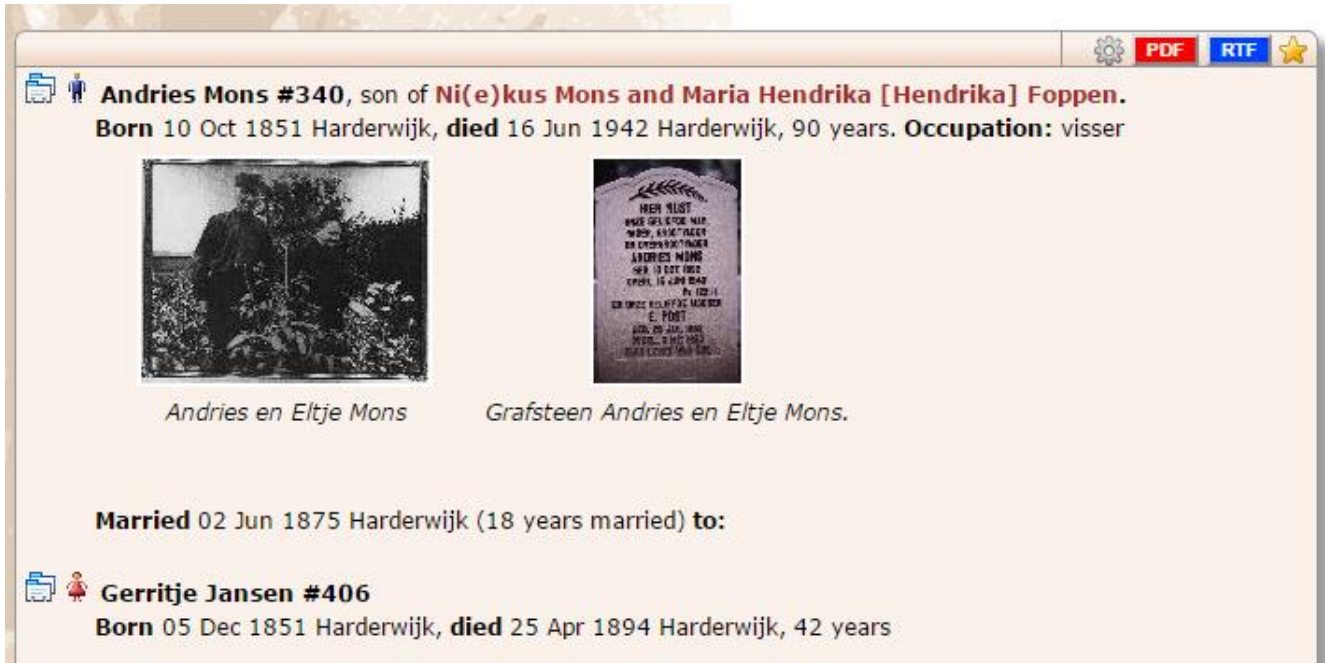
After install, check the settings in the administration menu!

Administration	
HuMo-gen status	
HuMo-gen Version	5.1.11
PHP Version	5.6.3
MySQL Version	5.6.21
Database	OK
Database tables	OK
Size of statistics table	48 kB If needed remove old statistics.
HuMo-gen security items	
Check admin account	Standard admin username or admin password is used. Change admin username and password.
Failed login attempts	Number of failed logins attempts last month: 0 Logfile users
Login control	At the moment you are logged in through PHP-MySQL. INFO
register_globals	OK (option is OFF)
display_errors	UNSAFE (option is ON) change this option in .htaccess file.
Family trees	
Status tree 1	Mons EN (2549 individuals, 987 families)
Status tree 2	HZ small EN (50 individuals, 22 families)


TIPS:

- Administration > Settings: Check the default settings, if you want, fill in the name of your website, e-mail address etc.
- Administration > Settings: *Here you can also set the default language for display and for the administration menu (each separately).*
- Gedcom > Family Trees : Here you find the settings for each tree, a.o. the name of the tree, the path to the pictures, etc.
- Users > Users : Here you can create new users, and connect the user to a user group.
- Users > Groups : Here you can change several settings for EACH user group, a.o. privacy, showing pictures and texts.

Pictures/ media



Andries Mons #340, son of **Ni(e)kus Mons** and **Maria Hendrika [Hendrika] Foppen**.
Born 10 Oct 1851 Harderwijk, **died** 16 Jun 1942 Harderwijk, 90 years. **Occupation:** visser

Andries en Eltje Mons *Grafsteen Andries en Eltje Mons.*

Married 02 Jun 1875 Harderwijk (18 years married) **to:**

 **Gerritje Jansen #406**
Born 05 Dec 1851 Harderwijk, **died** 25 Apr 1894 Harderwijk, 42 years

Remarks:

Besides picture files, in HuMo-gen it's also possible to link the following file types as picture linking:

(manner of display when clicking these icons will vary according to the browser and installed programs)

- Documents: PDF and DOC
- Video: AVI, WMV, MPG and MOV
- Audio: WMA, MP3, WAV, MID, RAM and RA

Picture/ media names:

- 1) It is advisable to save the names of pictures in small (non capital) letters. That way most problems on Linux servers can be avoided! This is because on Linux servers "Picture.jpg" is a different picture than "picture.jpg".
- 2) Don't use spaces in filenames and folder names. Example: john_snow.jpg
- 3) Don't use accent characters (é and è for example) in filenames and folder names.

Example 1: picture settings using default media path

Use the default media path (HuMo-gen > 5.1.10): media/

The pictures will be stored inside the HuMo-gen program folder: media.

www.myhomepage.nl/humo-gen/ => folder for HuMo-gen.

www.myhomepage.nl/humo-gen/media => folder for pictures.

Set the path to the pictures:

Go to the administration menu: Family Trees > Family Trees > Select a family tree

Select: Family tree data > path to pictures. Use the default picture path: **media/**

Example 2: picture settings using a relative path

The pictures are stored in a separate folder outside the HuMo-gen program folder.

www.myhomepage.nl/humo-gen/ => folder for HuMo-gen.

www.myhomepage.nl/pictures/ => folder for pictures.

Set the path to the pictures:

Go to the administration menu > Family Trees > Family Trees > Select a family tree

Select: Family tree data > path to the pictures. Use a relative path (yes, ../ belongs to the path): **../pictures/**

Example 3: picture settings using full path

www.myhomepage.nl/humo-gen/ => folder for HuMo-gen.

www.myhomepage.nl/pictures/ => folder for pictures.

Set the path to the pictures:

Go to the administration menu > Family Trees > Family Trees > Select a family tree

Select: Family tree data > path to the pictures. Use a full path: <http://www.myhomepage.nl/pictures/>

Settings per user group

It's possible to change picture permissions per user group:

TIP: The group "Guest" is for persons who are not logged in.

Show photobook per usergroup:

Administration menu > Users > Groups > (under caption Menu) Show photobook: Yes.

Show pictures:

Administration menu > Users > Groups > (under caption General) Show pictures: Yes.

Add pictures

Normally pictures will be processed by using a gedcom file. You will then upload all pictures files to the picture folder you created and set the path as explained above.

It is possible to add pictures to a person manually after a gedcom was already imported.


Go to administration menu > Editor

Select a person, make sure the "Individual" tab is activated.



If no picture was attached to this person until now, you will find this line on the person's editor page:

General source for person		
[+] Picture/ Media	[Add]	

If a picture was already attached to the person you may see this:

General source for person		source [1]
[+] Picture/ Media		
	[Add]	

Click [Add] and this will open additional fields:

General source for person		source [1]
[-] Picture/ Media	[Add]	
[+] 	<div>Picture/ Media</div> <div> <input type="text"/></div>	source [0]
Upload new image (max: pic 2MB) or media (max: 49 MB): <input type="button" value="Choose File"/> No file chosen <input type="button" value="Upload"/>		

Clicking the additional + in the large box to the left will open even some more optional fields:

General source for person		source [1]	
[-] Picture/ Media		[Add]	
[-]	Picture/ Media	source [0]	
	<input type="text"/>		
date = <input type="text"/> date <input type="text"/> place <input type="text"/>			
text <input type="text"/>			
Upload new image (max: pic 2MB) or media (max: 49 MB): <input type="button" value="Choose File"/> No file chosen <input type="button" value="Upload"/>			

If the picture file was already placed in the picture folder you will be able to find it in the pull-down field:

Places		[Add]	
Adresses			
General text for person	Picture/ Media	<div>Hans1955.jpg HansKees car 1960.jpg HansKees1955.jpg Invoice.pdf Kees 1966.jpg Kees1955.jpg Lucid3sm.jpg MammaKees1953.jpg Movie.wmv NelKees1953.jpg OmaKees1953.jpg OpaOma1950s.jpg PappaKees1953.jpg SAM_0017.JPG SAM_0023.JPG Signitlg.jpg alt a.pdf ans lokenberg 1953.jpg avishai 1999.jpg bbbbook2.jpg</div>	source [0]
General source for person		source [1]	
[-] Picture/ Media			
[-]	Picture/ Media	source [0]	
	<input type="text"/>		
date = <input type="text"/> date <input type="text"/> place <input type="text"/>			
text <input type="text"/>			
Upload new image (max: pic 2MB) or media (max: 49 MB): <input type="button" value="Choose File"/> No file chosen <input type="button" value="Upload"/>			

If you have not yet placed the picture in the picture folder by FTP, you can use the upload option just below the picture fields.

Don't forget to click the SAVE button on the top of the editor page!

Generate thumbnails

After installing the pictures and settings you can create thumbnails. A Thumbnail is a small version of a picture. Several pages will automatically use these thumbnails. For instance the photo album and family pages. Webpages will load faster when using thumbnails, and there will be less bandwidth usage!

To Create thumbnails:

Go to: Admin screen > Control > Create thumbnails.

Select the folder to create the thumbnails for, and click 'Create thumbnails'.

Normally the thumbnails will be created, but in some cases it will not. Then the picture folder needs more rights.

Two possibilities to solve this:

- 1) Create the thumbnails at a local pc (after installing HuMo-gen).
- 2) Change the folder rights (if you want you can do this temporary).

Picture problems

If a picture is too large (after clicking on it), then the original picture is too big. You have to resize the pictures.

Error message

If you receive the following or similar error message:

Fatal error: Call to undefined function: imagecreatetruecolor() in c:\program files\easyphp\www\humo-gen\admin\thumbs.php on line 67

Act as follows:

- Change the php.ini file: remove the ; before the line with: extension=php.gd2.dll
- Restart the apache server.

Users and User groups

What are Users and Groups?

Groups:

A group is a collection of settings that determine what is displayed and available to end-users of your web site.

These settings include among others: menu items that can be displayed or hidden, privacy settings (like hiding details for living people), show or hide text items or sources etc. If you have multiple trees on your site you can also decide which trees will be shown or hidden for this group.

Users:

A user is a person who you have supplied with a username and password to access your web site. Once you have created a new user, you can connect him to a group. When this user logs in, he will be able to experience your site according to the settings that you have made for this group.

A user can only be connected to one group. However, a group can have as many users as you like.

Two special users are Admin and Guest.

"Guest" is a user who is not logged in and by default he is connected to the group "Guest". Likely you will want to give this group the most restrictive settings.

"Admin" is you - the owner of the web site. This user will have most extensive privileges. You can create other users and connect them to the "Admin" group, meaning they have full access rights, identical to yours. Only do this if you completely trust a person, like a brother, wife etc.

Standard Users and Groups

The menus for users and groups can be accessed in the administration window under: Users > Users and Users > Groups

HuMo-gen already includes a few standard users and user groups.

The standard users are:

Admin
Family
Guest

The standard user groups are:

Admin
Family
Guest
Group 4
Group 5
Group 6

These group names can be changed too and additional ones can be added.

Adding and changing Users and Groups

Both in the Users and in the Groups menu, names may be changed and other Users and Groups can be added.

It can be quite useful to make a new Group yourself, for example in order to allow specific users access to one or more family trees (see also below).

After a new Group is created, this Group can be attached to one or more Users. This is done in the menu "Users".

Setting family trees by Group

In HuMo-gen you can display multiple family trees. It is possible to set which trees are visible to which groups!

This is done by the option (under the Group menu item): "Hide or show family trees per user group".

If you hide all trees from Group "guest", one HAS to log in before any data is displayed. (In other words the data on your site can not be seen by the wider public, only by those who you have supplied with a username and password). Those that are granted access you can divide in different Groups to see different sets of trees - according to your desire.

Editor

Since version 4.4 there is a new group option (admin panel > Users > Groups).

Under the green caption "Group" you will notice the option "Editor" that can be set to "YES".

Users who are connected to a group with "Editor" set to "YES" can log into the administration menu. They will not see the entire admin menu but only the Humo-gen editor tab.

This way it is possible to allow certain family members of your choice to edit the family tree, without giving them additional admin privileges.

If you use a .htaccess file to log in to the administration menu (instead of the default PHP-MySQL login), then you have add a new username to the access file, called: 'editor'.

This username can be used to log in to the admin panel, but there will be only one option: Editor.

Google Maps

Admin options

On the administration screen you will find the Google map feature under: Control -> Google maps.

IMPORTANT: before creating the location table, please make sure all location entries in your database are unambiguous, otherwise you will get many incorrect results.

Some tips for correctly phrased location names:

- *Do not use street names in the location field in Humogen (or your genealogy program from which you imported the Gedcom). Street names belong in an address field, not in the location field. Anyhow the Google map feature is meant to display cities and towns, not specific addresses. Even if mapped correctly, this would give such a multitude of markers that it would render the map useless.*
- *The most effective phrasing is: "location, country" ("Amsterdam, Holland"). If there are more cities of the same name in this country, you may add the state/province/region. In the USA for example this would be Dallas, TX, USA (only use the official abbreviations or full name of the state or province). If more places with the same name exist and the name is phrased ambiguously, Google will usually choose the most prominent one. For example "Amsterdam" will indeed give Amsterdam in Holland and not one of the Amsterdams in the USA. My advice is not to rely on this.*
- *It is a good idea to perform a clean-up of all locations in your database before attempting to create the location table.*

Obtain and activate Google API key

What is an API key and why do I need it?

API stands for Application Programming Interface.

Whenever an application, HuMo-gen in our case, requests data from the Google servers it "talks" to Google's API. It is important to understand that each installation of HuMo-gen is a separate "application", so each user has a separate application that sends queries to Google's servers.

By default, things are simple. The application requests data ("sends a query") and Google's server sends the data back. Until recently this is how requesting data from the Google Maps server worked as well.

However, Google has to limit its free services to some extent. Countless applications, most of them commercial, implement Google map features and so millions of queries are made each day to the Google map server. Google has set rules whereby applications that launch queries beyond a certain number, have to pay for that service.

In addition, some people misuse Google maps for unwanted purposes.

All of this has led Google to decide to monitor each application's use of Google maps.

The way this is done, is that each application has to obtain a "key" (a string identified with a specific Google account) that has to be send with every request (query) to Google's server.

Google keeps track of how many request have been made with each specific key and so knows when this specific application exceeds the limit of allowed queries. Also, if it should be found that misuse was made of Google's services, it is easy to track the account connected to the key that did the unwanted query.

As of June 22, 2016 Google demands that each new application will send a key along with each query. "New applications" are defined as applications that until that date have not yet send queries. To the best of our understanding this means that if you had HuMo-gen installed and used Google maps before this date, queries can continue to be send from your site without a key. If, however you have not used Google maps from HuMo-gen before this date, queries without a key will meet an error. It is important to stress that the above relates to any queries made from your site, whether it's the user end (by your visitors) or the admin site (by your use of the Google map settings screen, such as creating a location database).

Entering a key in HuMo-gen even though you've been using the Google maps feature before June 22, 2016 is harmless and though it is not necessary it certainly doesn't hurt.

To allow for the implementation of the new Google policies, the HuMo-gen Google map admin interface has been adjusted to allow for entering your API key and storing it in the database. Once you have done this, the key will be automatically sent along with each use of the Google maps.

The following will explain how to obtain a Google API Key and how to set it in HuMo-gen.

Obtaining an API key from Google

Here are the steps to obtain a Google API key:

1. In order to get a Google API key, you must have a google account.
If you already have one, make sure you are logged in (like having gmail working) and then go to step 2 below.
If you have not yet got a google account, go to: <https://accounts.google.com/signup> and create one.
2. Go to: <https://developers.google.com/maps/documentation/javascript/get-api-key#get-an-api-key>
3. You should now see this screen:

Get an API key

To get started using the Google Maps JavaScript API, click the button below, which takes you to the Google API Console, guides you through the process, and activates the Google Maps JavaScript API and any related services automatically.

GET A KEY

Alternatively, follow these steps to get an API key:

1. Go to the [Google API Console](#).
2. Create or select a project.
3. Click **Continue** to enable the API and any related services.
4. On the **Credentials** page, get a **Browser key** (and set the API Credentials).
Note: If you have an existing **Browser key**, you may use that key.
5. To prevent quota theft, [secure your API key following these best practices](#).
6. (Optional) Enable billing. See [Usage Limits](#) for more information.

In the Google API Console, you can also [look up an existing key](#) or [view a list of enabled APIs](#).

For more information on using the Google API Console, see [API Console Help](#).

4. Press the blue GET A KEY button. You will now get this screen:

Register your application for Google Maps JavaScript API, Google Maps Geocoding API, Google Maps Directions API, Google Maps Distance Matrix API, Google Maps Elevation API in Google Developers Console

Google Developers Console allows you to manage your application and monitor API usage.

You have no existing projects. A new project named "My Project" will be created.

Please email me updates regarding feature announcements, performance suggestions, feedback surveys and special offers.

☐ Yes ☒ No

I agree that my use of any services and related APIs is subject to my compliance with the applicable Terms of Service.

☒ Yes ☐ No

Agree and continue

5. In above screen set first question to No and second to Yes (required) and press "Agree and continue".
6. Processing the above may take half a minute or so and when that is over you will get the next screen:

API Manager

Overview

Credentials

←

Create browser API key

Use this key in your web application

API requests are sent directly to Google from your users' browser. [Learn more](#)

Name

Browser key 1

Accept requests from these HTTP referrers (web sites) (Optional)

Use asterisks for wildcards. If you leave this blank, requests will be accepted from any referrer. Be sure to test before using this key in production.

.example.com/

Note: It may take up to 5 minutes for settings to take effect

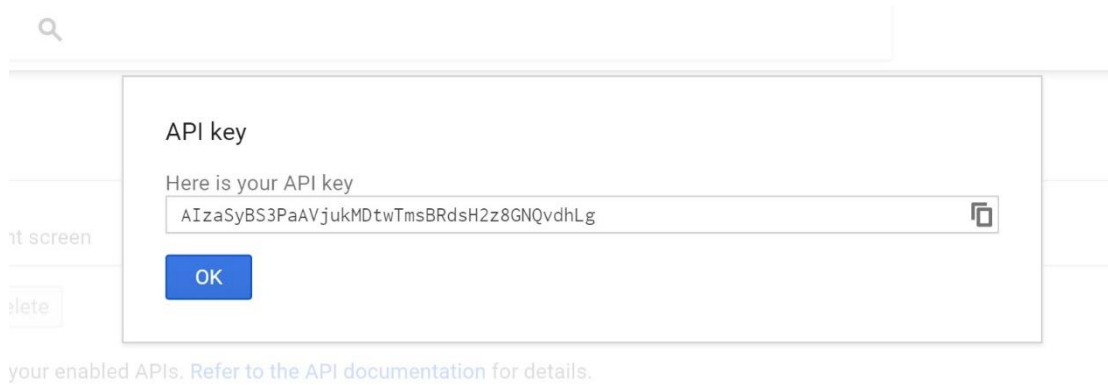
Create Cancel

7. Under "**Name**" fill in anything to identify this key (just in case you will encounter other programs and applications in the future that will require more keys and you want to be clear as to which is what). For example, call it "humogen key".
8. The next field "**Accept request from these HTTP referrers**" is very important, though it is marked as "Optional".
It is like this. If anyone, like those hackers out there, would somehow get hold of your key they could then use that key from their sites to do all kind of nasty things which would then be attributed by Google to your account. You really don't want that.
The solution is simple. If in this field you enter the name of your site's URL, Google will accept this key only if it is sent from your site. So even if hackers try to use your key from their sites, it won't work!
Some notes on entering the URL of your site:
 - a. You only have to list the main domain of your site. All sub-domains should automatically be included. Yet, since the example on the page in above screenshot suggests so, add */** after your main domain just to make sure.
If for example your HuMo-gen installations resides in:
mydomain.com/gen/humogen
you should enter into the field:
mydomain.com/*
 - b. If your domain has www as part of the URL address, add *. in front.
So if your HuMo-gen installation resides in:
www.mydomain.com/gen/humogen
you should enter into the field:
.mydomain.com/

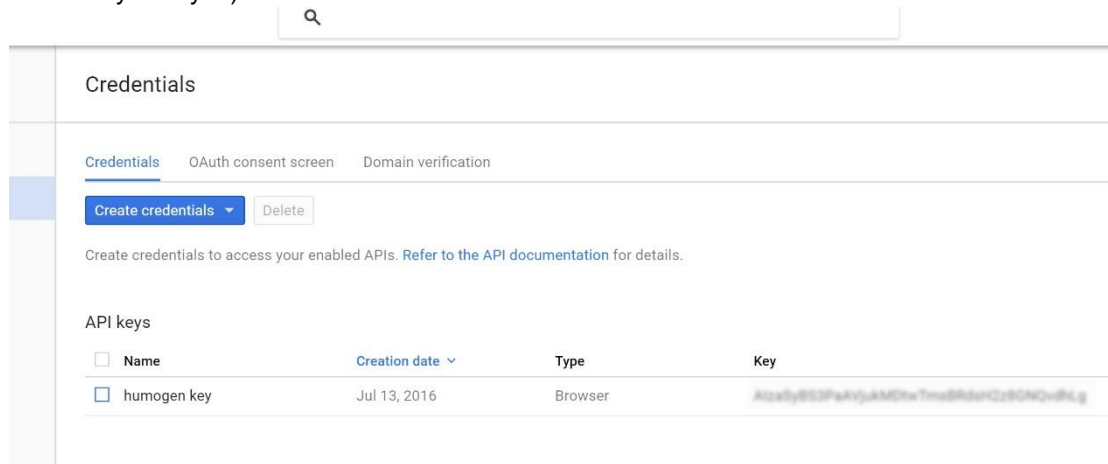
Though the page allows for entering more than one URL, this won't be necessary if you use HuMo-gen only from one site.

Please note that it may take up to 5 minutes before the key will be recognized for this site, so take your time before trying it out.

9. After filling out the two fields, click the CREATE button.
You should now get this popup:



10. If you wish, you could copy the key to the clipboard already now by clicking the little copy icon on the right, but you can also do this in the next screen.
11. Click OK and you will return to the main window, now with the API entered with your key (yes I blurred my key – it's not your eyes):



12. That's it. If you didn't already copy the key for the pop-up, you can now choose and copy it for use in HuMo-gen.

Using the API key in Humo-gen

Here are the easy steps to enter your key in Humo-gen for use with the Google maps feature.

1. In Admin go to Control -> Google maps.
From HuMo-gen version 5.1.12 you will see the new API key field right on top:



2. Enter the key and press Save.
The key will now appear on the screen and will be used in HuMo-gen as in the screenshot below (the key is blurred again):



If ever needed, you can change it here too.

3. That's all. Have fun with HuMo-gen's Google maps feature.

Create/ update Location database

In order for the Google map feature to appear in the main menu of your website, you first have to create a location table from your database. This is the top section of the Google maps admin screen. The text in this section will tell you how many location are to be mapped and how long this is likely to take. Please note that first time location table creation is a lengthy process since each location is sent to Google geocoding to obtain latitude and longitude details. Since Google puts limitations on the maximum speed of transfer, the rate is about 2 minutes for each 100 locations (this may be longer depending on server load and bandwidth). Also, Google limits the query for up to 2500 locations in 24 hours. If you have over 2500 unique locations, location table creation will cease after 2500 entries. When you push the Control -> Google maps tab again, you will see how many locations are left to map. You can continue doing this the next day.

When you upload a revised or new Gedcom file, you may wish to refresh the location table. Only new locations will be sent for geocoding, so these updates should not take too much time.

After the location table creation is completed you should see a list of locations that Google did not manage to geocode. You may want to copy this list, to manually enter these locations later if you obtain correct latitude/longitude details from elsewhere (see the Editing section below).

Edit location database

Google geocoding is an automatic process that does not always get things right, especially if location names are ambiguous.

In the editing section you can completely delete erroneous entries.

You can also manually change latitude and longitude details of a location if you feel they are incorrect. Of course you have to obtain the lat/long data yourself.

In case you have locations that google didn't find at all and therefore don't appear in the list, you can add these manually after you obtain the lat/long data yourself. Please note that you have to enter the location names exactly as they appear in your database, including letter case, commas, spaces etc.

TIP: An easy way to find the lat/long coordinates yourself is as follows:

- Go to maps.google.com and search for the location you want
- Find the red marker with the "A" inside and right-click that
- In the pop-up menu choose: "What's Here"
- In the search bar on top you will see the coordinates!

Deleting the entire location table

If you want to remove Google maps altogether from your website's main menu, you can do this by deleting the location database. After deletion, the Google map item will disappear from the main menu's "Tools" tab.

End-user interface

The menu

The top menu of the google map feature has two lines:

Top line:

- **Choose family tree.**
You will see the name of a tree and next to it the the button "Change".
On sites with multiple family trees here you can choose which tree to map.
- **The "All birth locations" button**
This button will place markers for all unique birth locations in the tree, irrespective of the dates of birth. Also people with no known birth date are included.
- **The "births until" slider**
With this slider you can mark the birthplaces of persons who were born until a certain date. The slider starts at 1550 and advances with periods of 50 years. You can use this slider to see the family spreading over the world and accumulating in any specific location over the centuries.

Second menu line:

- **"Map by specific family name(s)".**
Pressing this button will open a window with a list of all family names in the tree. You can mark the checkbox next to one or multiple names and press "Choose" to start mapping the locations of those families only. After pressing "Choose" you will see a yellow banner near the top of the map, informing you which family names are being mapped. If this banner gets in your way, you can minimize it to the menu bar. Both on the banner itself and on the minimized version, there is an option to cancel filtering by name and return to mapping all families.
- **"Find location on the map"**
Here you can pick a location from all locations in the tree and zoom in to it automatically.

The map

- After clicking the "All locations" button or using the slider, colored markers will be placed on the map. Inside the marker you will see the number of people born in that location.
- There are 4 different size markers (from large to small): Red markers (over 100 people), blue markers (50-99 people), green markers (9-49 people) and yellow markers (1-9 people).
- When you hover with the mouse over a marker a "tooltip" will show with the name of the location.
- When you click on the marker you will see two links:
 1. The first link will open a new browser tab (or page, depending on your settings) with the Wikipedia entry about this location (if such an entry exists).
 2. The second link will present (in the Info Window itself) a list of all persons born in this location. The names in this list are clickable and will open a new browser tab (or page) with the family page of this person in HuMo-gen.
- Please note: by default, birth locations from before 1550 are presented on the map when it loads (if they exist in the database) since that is the default position of the slider. To see all locations press the "All locations" button or use the slider to see spread of the family over the centuries.

Enjoy!

CSS Layout

I attempt to place as many as possible layout items in the gedcom.css file. This way it is possible to change the layout from within one file. This may entail anything: background picture, colors, bold, italic, alignment, size of fonts etc.

Gedcom.css

This is the general layout file, here you can adjust much of the default layout.

gedcom.css effects the "elegant" theme/ style. For other themes, such as "antique" or "silverline" you may have to adjust their respective css files in the "styles" folder.

Following are some examples to change the layout in HuMo-gen.

TIP: first create a backup of the original CSS file, so you can always restore to default in case something goes Wrong!

Settings for the BODY tag

Background: the standard background picture is called "backgrnd.gif". This can be changed in the following piece of code from gedcom.css. Also "repeat" and background position may be changed. Just remove the /* and */ signs to activate these settings.

The "body" part of the code contains all general settings for a page, so here you may also change the font-family, font-size etc.

```
body {
    background-color:white;
    color:black;
    background-image: url("backgrnd.gif");
    /* background-repeat: no-repeat; */
    /* background-position: center; */
    font-family: Trebuchet MS, Arial, sans-serif;
    font-size: 14px;
    height:100%; max-height:100%;
    overflow:hidden;
    /* overflow:scroll; */
    padding:0; margin:0; border:0;
}
```

Alignment of the person index (person list)

The index list of persons is by default centered on the screen. The names are aligned to the left.

To left-align the links: change "text-align:center;" into "text-align:left;"

```
/* Align index list */
.index_list1{
    Text-align:center;
    /* text-align:left; */
}
```

```
/* Align text of index_list */
.index_list2{
    margin-left: 20%;
    text-align:left;
}
```

Size of pictures

By default pictures are shown at full size when you click them. The display size of pictures can be changed in the following line, by removing the /* and */

```
/* img { width:100px; } */
```

Configuration Files

Several config and php files can be changed. We do recommend to backup these changes and make notes of them. So it will be easier to restore them when a HuMo-gen update is done. The following files can be manually adjusted:

include/db_login.php

This is the file that contains the database login details.

admin/prefixes.php

This file contains the prefixes for last names (mostly for Dutch family names, like "van Gogh")

The file can be edited using the administration page > Control > Prefix editor.

Almost all configurations can be done using the administration pages!

Privacy filter

In HuMo-gen there is a privacy filter which can be used to filter or show persons.

The best way to filter persons is to use your genealogical program and filter before you generate the gedcom file.

Privacy settings per user group

HuMo-gen uses the following rules to filter:

- 1) Standard: SHOW all persons.
- 2) If privacy filter is activated: FILTER all persons.
- 3) Use the extra filter options to FILTER or SHOW persons.

The filter options can be found here:

Administration menu > User groups.

[If necessary I will explain all options here]

Privacy settings per family tree

Normally you will use the privacy options in the USER GROUPS

But it's also possible to filter or show ALL persons in a family tree.

Go to the: administration menu > Family trees > select a family tree > tree data.

There is a options: **Family tree privacy**, you can use the following options:

- Standard
- SHOW all persons
- FILTER all persons

Gendex

The dutch genealogical search engine <http://www.stamboomzoeker.nl> uses gendex to index family trees.

At this moment I don't know if other genealogical search engines can use this code...

EXAMPLE:

Root address: <http://www.website.nl/humo-gen>

Your URL: <http://www.website.nl/humo-gen/gezin.php?id=> (Don't enter anything after the xxxxx)

Gendex file: <http://www.website.nl/humo-gen/gendex.php>

Privacy filter: not necessary, the gendex.php file filters persons after 1920. It's possible to adjust it.

Several items

Mail form

If you enter an email address in the HuMo-gen admin menu, HuMo-gen will use a mail form to allow people to send you an email. Your email address will not be exposed on the internet.

It is possible to add an email link on each family page. In that case a link to the last visited family page will be sent along with the email!

This can be done in the following manner:

- Go to the admin menu.
- Click on Family trees.
- Click on Family tree texts (per language).
- In the field labeled Lower text family page enter the following text (that is given there as an example):
For more information: contact

It's also possible to add an extra "Receive newsletter: yes/ no" question in the mailform.

- Go to admin screen > Control > Settings.
- Set option "Mail form: use newsletter question" to "Yes".

If changed to yes the user will be asked if he wants to receive a newsletter (HuMo-gen itself does not include an option to send newsletters).

Skins/ styles

You can determine yourself which of the included skins you want to offer on your site. The skin files are located in the folder "styles". You can remove skin files that you do not want to display to your users. Remove the skin file itself and the corresponding CSS file.

In the admin menu you can determine what will be the default skin. You visitors will see that skin by default on a first visit. They can then choose another skin if they want to, and their choice will be saved in a cookie for further use.

If you leave only one skin file and set that as the standard skin, the selection box will no longer be displayed.

Links with sources and text

In the EDITOR in the admin menu, under the "sources" tab, in the field "Publication" you can enter a clickable link (you have to precede it with: <http://> or <https://>)

This can be done in several other text fields as well.

Country visitor statistics, HuMo-gen add-on

By default, the statistics option in the admin menu will not show the country of origin of your site's visitors. In order to show this, you have to download the folder "ip_files" and place it in the admin folder. After that the country of origin statistics will be displayed automatically.

September 2009: Yossi Beck made a new function to show statistics per country. This function is quite large (about 1 MB), so it is a separate download!

1) Download the file ip_files.zip from server 1 or server 2:

HuMo-gen a freeware web-based genealogical program.

beck.org.il/downloads/ **server 1** newest country add-on

<http://sourceforge.net/projects/humo-gen/files/> **server 2** country add-on september 2009.

- 2) Unzip the file
- 3) Place the folder ip_files in directory admin.
- 4) Automatically there will be an extra country statistics view in the statistics screen!

Database tables

It is quite easy to adjust the tables (especially if you import gedcom files and don't use the editor function).

- 1) Open the file gedcom_tables.php
- 2) Change any line, i.e.: you can change source_abbr varchar(50) to source_abbr varchar(150). Now this field can contain up to 150 characters.

Now import the gedcom file again.

Fan chart

If you remove the folder "fan chart" or rename it, the fan chart icons will disappear.

Language files

It's possible to create new language files or to adjust existing language files.

Adjust an existing language

Move to the admin section and open the tab "Control -> Language editor".

Change the translation in the right column and press save.

Add a new language

HuMo-gen uses the Poedit language system for most translations (except the main menu "Help" screen).

All language files can be found in the /languages/ folder in HuMo-gen, which is divided in sub-folders according to the common ISO standard 2-letter country codes ("en" for English, "nl" for Dutch, "fr" for French etc.).

It's also possible to use country codes like "en_us" or "en_ca".

The steps to add a new language are as follows.

In this tutorial we will use "pt" for Portuguese. Replace this everywhere with your country code.

Please follow these steps in **chronological order**.

1. Create a new subfolder in the /languages folder: /languages/pt
2. From the languages/en folder, copy the following files to the new languages/pt sub-folder:
 - a. Language_data.php
 - b. Language_help.php
 - c. en.po
 - d. (optionally) the timelines folder
3. **The country flag**
Create a 21x15 px gif file of your flag and place it in the /languages/pt folder with the name "flag.gif".
This is important so you can find and identify your language in the admin and end-user screens.
4. **The language_data.php file**
This file holds only 2 items for you to tend to:
 1. **\$language["name"]**
Set the \$language["name"] variable to the native name of your language: \$language["name"]="Português";
 2. **\$language["dir"]**
If your language is a left-to-right language (like Portuguese and English) leave the setting as it is.
Should it be a right-to-left language (like Arabic), change the setting to: \$language["dir"]="rtl";
5. **The en.po file**
This is a "poedit" type file.
To translate the file into your language you can use the built-in HuMo-gen language editor or an external program (like "Poedit") on your PC.
Change the name of the file to: **pt.po**
To use the HuMo-gen language editor
Open the tab "Control --> Language editor".
Among the flags displayed, you should now see your country's flag that you created and placed in step 3. Click it.
Make sure the caption of the right column now says "Translation into Português" (or whatever you called the name of your language in step 4).
Now you are ready to translate and change the English terms in the right column to your language.
When you are ready (or whenever you want to take a break), press "Save" above the right column.
IMPORTANT NOTE: *the untranslated items always appear on top, so don't get a shock if you translated a lot of items, pressed "Save" and then see empty fields. Your translated items did not disappear, they will show when you scroll down!*
When you press "Save", a new pt.mo file be save to the languages/pt folder. This is the actual compiled file that HuMo-gen will use. You don't have to open or handle the .mo file at all - it is created/updated automatically each time the .po file gets saved.
To do the translation in a PC editor such as Poedit
Download and install Poedit (www.poedit.net) and install it on your PC
Download the pt.po file to your computer and open it with Poedit.

Translate the terms (if you leave an item untranslated it will appear in English on your site), and save your work. The Poedit program will have saved the **pt.po** file and has created a **pt.mo** file as well. Upload both files to the /languages/pt folder on your server.

6. **The language_help.php file**

The .po file holds all terms that are used in the HuMo-gen program, with the exception of the "Help" screen that is opened with the "Help --> Help" tab on HuMo-gen's main top menu.

To translate this file, open it in any text editor and translate the English terms.

Make sure to leave the HTML tags intact, to ensure proper formatting.

7. **The "timelines" folder**

This folder holds the text files for the timelines feature in HuMo-gen. This is one of the reports, where the genealogical events from a person's life (birth, marriage, birth of children etc) are shown next to historic events of that period.

The historic events are subdivided in continents/countries/cultures, so that the end-users can choose the desired historical background for this person.

If you do not add this subfolder to your /language/pt folder, the "timelines" icon will not be displayed in the person's pop-up when HuMo-gen is viewed in your language.

If you place the timelines folder in /languages/pt untranslated, people who view your HuMo-gen site in your language will see the historic events displayed in English.

If you wish, you can translate all or some of the .txt files into your language. You can also add a new .txt file with historic events of your country, following the guidelines on this topic elsewhere in the manual.

If you have added a new language in the above described way, please post all above files to the [HuMo-gen forum](#) so we can include them in the next official HuMo-gen version!

Once your language is officially included in HuMo-gen, please check periodically on Transifex, where the language files are kept, updated with the latest additions to HuMo-gen. This way you can check if there are new items to be translated and if so, you can translate them online. The new translations will then be used in the following HuMo-gen version. This way you can help us keeping your language constantly updated!

Use a link to change the language

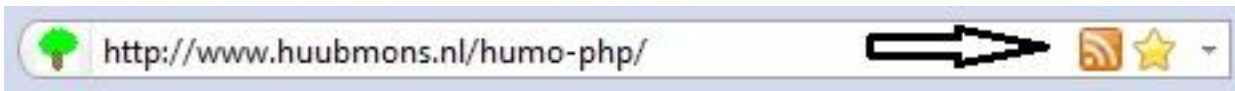
It's possible to make a direct link to HuMo-gen AND change the language. Use the link: http://link_to_website/humo-gen/index.php?language=nl

Birthday RSS feed

It is possible to create a "Birthday RSS feed".


Feeds can be used for RSS news readers, or to show a list of birthdays at a community website like Facebook.

- 1) Go to the admin menu > Control > Settings > Link for birthdays RSS. Just fill in the link to your HuMo-gen website, something like: <http://www.yourwebsite.nl/humo-gen>
- 2) Admin menu > Users > Groups > Select a user group > Birthday RSS in main menu > Yes. Remark: if you want to connect the RSS feed to a community website, you have to select "Yes" in the user group "Guest".
- 3) Check the RSS link. Go to your HuMo-gen website. In the browser you will see an RSS button like this:



If there is no RSS button, check if your browser supports RSS. Sometimes an RSS extension must be installed first.

Click on this RSS button to see the birthday list, it should look like this:

**Feed for Birthday calendar**
Subscribe to this feed using: Bloglines ▼ Subscribe Now
☐ Always use this reader to subscribe to feeds.

Feed preview

Geertje Klinkert (33) († 19 MAR 1908)

Hendrik Moens (49) († 07 SEP 1637)

Herman Moens

*TIP: if you make a link to HuMo-gen RSS from another website, you can select the language!
Just add: "?lang=nl" to the link (replace "nl" with the country code of the language you want to display).*

Creating/ removing Timeline files

A HuMo-gen download (from version 4.6) includes the timeline option (available from the pop-up menu next to each person). The timeline report show the years in which the person lived, with on the left side personal events in this person's live, and on the right side historic events in this same period.

By default, HuMo-gen includes 7 timeline history files that can be chosen from the timeline menu by the end-users: These files contain historic events on these topics: Africa, America, Asia, Europe, Oceania, Netherlands and Jewish history.

Removing certain or all timeline history files

You may not be interested in showing all these options on your web site. To remove one or more of these options from the timeline menu, go to the humo-gen/languages/en/timelines folder and remove the .txt file(s) you do not want to be displayed. Repeat the same for each display language (i.e. humogen/languages/**fr**/timelines, humogen/languages/**nl**/timelines).

Adding your own timeline files

It is quite easy to add your own timeline files (for example with the history of your own country). Take these steps:

1. Create a new file with the name you want to appear in the menu and with .txt as suffix (i.e. belgium.txt)
2. Each line in the file should have one of the following entries:
 - a. **1857 Battle of Nothingland** (4-digit year, single space, free text)
 - b. **1834-1842 War of Nogood** (4-digit year, dash, 4-digit year, single space, free text).
3. Note: the year **has** to be listed as the first item. Therefore, if you want to give a full date for an event, place the month and day as the first part of the text section after the space:

1857 January 5, Nomination of President Whatshisname.
4. In the file a period has to be entered as 1857-1861. On display this will be rendered as: 1857 (till 1861)
5. Place the lines in chronological order. You can have multiple lines starting with the same year. These will be grouped automatically by the program. This is preferable and easier to read for the user, than placing multiple events on the same line after a specific year.
6. That's all. Save your file and place it in each language's timelines folder. Remember that if you place it only in one language folder, people using another language display for HuMo-gen will not be able to see the historic events at all. I suggest that for languages you don't know or don't want to translate to, you just put an English file so people will at least see something there. (The existing timeline files in HuMo-gen come in Dutch for /nl and in English for all other languages)
7. Anyone who wants to translate existing timeline files to HuMo-gen languages other than Dutch or English is welcome to send them to us (zipped) on the HuMo-gen forum: <http://www.humo-gen.com/genforum/viewforum.php?f=25>

Adding links to a timeline file

When you make your own timeline file, you may want to add links to related pictures or even external websites. This can be done exactly the way it is done in any html document. For example, let's say your timeline text looks like this:

1840 January 10, the new Northchester Town-hall was inaugurated.

and you would want "Northchester Town-hall" to be a link to a photo of that building, called townhall.jpg. If the photo would be located within a "pictures" folder on your server, parallel to your humogen folder, you would use this in the text of your timeline file:

1840 January 10, the new Northchester Town-hall was inaugurated.

You may also use an absolute path to the photo on your server, or even to a photo on another site:

1840 January 10, the new Northchester Town-hall was inaugurated.

Changing default steps (periods)

By default the timeline report displays periods of 5 years, and the end-user can choose to display 1 or 10 years instead. If you have many timeline items, you may want to change the default to 1 year, and if you have very few you might prefer 10 as the default. To do this, look for line nr. 369 in the timelines.php file:

```
$step=5; // default step - user can choose 1 or 10 instead
```

Change the number from 5 to 1 or 10 to set a different default (\$step=1; \$step=10;)

Changing default timeline

By default "europe" is set as the default timeline. You may wish to change that, and set a different timeline as default (america, asia etc) or to set your self-made timeline file as the default. Also, if you remove one or more timeline files, the default may change to a different timeline than you want. Here we'll show you how to set the default timeline yourself.

On line 371 in the timelines.php file you will see this line:

```
$tml=3; // default timeline file
```

Since programming languages start counting at 0 (rather than 1) this means the fourth item on the timeline menu is set as default (0, 1, 2, 3). With a default installation of HuMo-gen this is "europe". To set a different default, simply count the menu items as they look on your website and deduct 1. For example, if the timeline you want is number 6 on the list, you want to set the variable to 5. So change line 371 to read:

```
$tml=5; // default timeline file
```

Changing the looks of the timeline report (for more advanced users)

The timeline report automatically has the same looks as any other table in humogen, according to the theme (skin) you use. If you want to change the looks of this report, you will have to add your own CSS class (let's call it "mytimeline").

First, in the file timelines.php on line 457 change:

```
print "<table class='humo' style='border:1px'>";
```

to:

```
print "<table class='humo mytimeline' style='border:1px'>";
```

Now you can create the "mytimeline" class and add it to the gedcom.css file. For example, one might add the following code:

```
table.mytimeline {
    font-size:18px; /* font size will be set to 18 pixel */
}
table.mytimeline td {
    border:1px solid blue; /* border lines will be blue */
    color:green; /* text color will be green */
    font-style:italic; /* text will be slanted */
    font-family:Comic Sans MS; /* default font will change to Comic Sans */
}
```

Of course you can change this to anything you like.

IMPORTANT: The above CSS that you place in gedcom.css will only influence the "Elegant" themes (skins). To

HuMo-gen a freeware web-based genealogical program.

influence the looks of the timelines report in the other skins, you will have to place the code in their specific CSS files that you can find in the folder styles/timelines (such as: Silverline.css)

Cookie management

According to recent European legislation websites are obliged to notify visitors about the use of cookies by the site.

The legislation was initiated to curb the use of cookies that collect data about the visitor's actions for marketing analysis and similar purposes. The legislation demands that prior to implementation of cookies by a web site, the website has to notify the visitor of the character of the cookies and get the visitor's agreement (by a confirmation click) before placing them.

The legislation makes an exception for cookies that are vital for the proper use of the site (an example is a sales site that uses a cookie to store items that you place in your "shopping cart" so they will be available when you move to the "checkout").

HuMo-gen cookies

HuMo-gen uses a few cookies, that are only used so that settings that the visitors made can be stored on their computer for their future use.

The cookies that are created by HuMo-gen are **not** used for any other purpose, are **not** transferred to others and the information they contain is used by **the visitor alone**.

Therefore no confirmation is asked of the visitor.

However, in order to comply with the obligation to notify visitors of the use of cookies, HuMo-gen (from version 4.8.4) does the following:

- The "Help" menu item contains a "HuMo-gen cookies" item that explains the character of the HuMo-gen cookies.
- On the bottom of the main entry page a link was placed to the above Help -> HuMo-gen cookies item.

HuMo-gen cookies are used for these purposes:

- The user chose a theme (skin) that is different from the default. The theme he chose will be used next time he visits the HuMo-gen site.
- The user used the star to mark a family as "favorite". This family will appear on his favorite list on future visits as well.
- In the photo album the user set the number of photos to be displayed at a different number than the default. This number will be used next time he visits.
- The user changed the font size with the A+A- buttons. HuMo-gen will be displayed with this font size next time he visits.

If a user does not want HuMo-gen to create these cookies, he can just refrain from changing the default values for the above features.

Cookies added to HuMo-gen by the webmaster of a site

The above section deals with the cookies that are used by an original version of HuMo-gen.

If a webmaster who installed HuMo-gen on his website, decides to manually add cookies in addition to those that exist in the original HuMo-gen version, **it is the explicit responsibility of that webmaster to change the terminology and the display of the cookie notifications needed to comply with the European legislation**. It is very likely that addition of third party cookies obliges the webmaster to obtain explicit confirmation of the visitor before implementing these cookies.

HuMo-gen can in no way be held responsible for legal actions taken against a webmaster who added cookies without taking the proper actions to comply with the European law.

On the web one can find numerous scripts that can be added to existing websites in order to place the necessary cookie notifications and confirmation requests. In most cases these scripts can be added to the HuMo-gen code without major changes.

Following is an example of implementing one of those free scripts.

Please note: this is an example only. The content and display of these notification scripts differ according to the character of the cookies employed and should be verified by the webmaster to make sure they comply with the relevant legislation.

In the file **header.php**, towards the end, just before the line with:

```
if (!CMS_SPECIFIC){  
print "</head>\n";
```

place the following piece of code:

```
?>
<style type="text/css">
  <!--
  #eucookiela { display:none }
  -->
</style>
<script src="//ajax.googleapis.com/ajax/libs/jquery/1.7.2/jquery.min.js" type="text/javascript"></script>
<?php
if(!isset($_COOKIE['eucookie']))
{ ?>
<script type="text/javascript">
function SetCookie(c_name,value,expiredays)
{
var exdate=new Date()
exdate.setDate(exdate.getDate()+expiredays)
document.cookie=c_name+ "=" +escape(value)+";path=/"+((expiredays==null) ? "" :
";expires="+exdate.toGMTString())
}
</script>
<?php }
```

Now, in the file **menu.php**, at the very end just before the last ?> add this:

```
if(!isset($_COOKIE['eucookie']))
{ ?>

<div id="eucookiela" >
<p><b>This site uses cookies. </b>
<a href="#" id="removecookie"><u>Confirm</u></a>
<a href="http://****mydomain****/cookieinformation.html"><u><i>More information</i></u></a>
</div>

<script type="text/javascript">
if( document.cookie.indexOf("eucookie") ===-1 ){
    $("#eucookiela").show();
}
$("#removecookie").click(function () {
    SetCookie('eucookie','eucookie',365*10)
    $("#eucookiela").remove();
});
</script>
<?php }
```

In the above piece of code, replace ****mydomain**** with the name of your domain and in the main folder on your domain place a file cookieinformation.html with all necessary notifications about the cookies you use on your site.

PHPMyAdmin

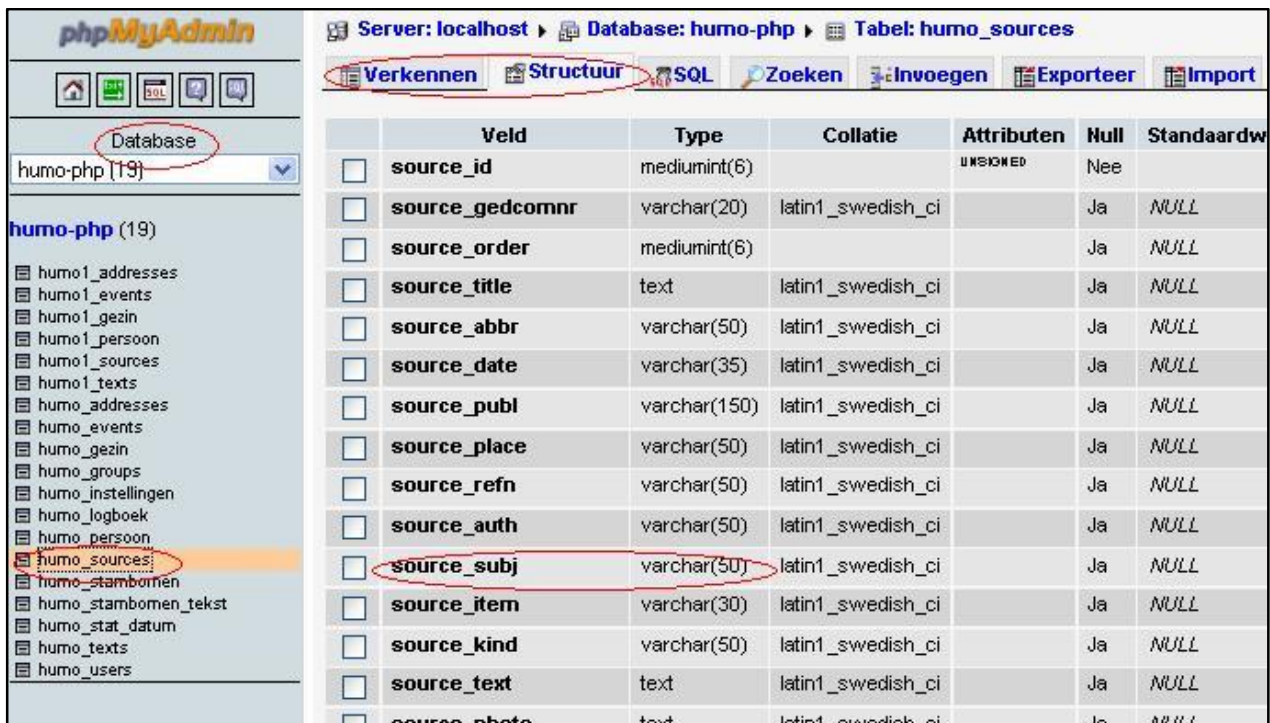
HuMo-gen uses a MySQL database to save genealogical data. It's possible to look, change or backup the data using the PHPMyAdmin program. Most hosting providers give access to this program. It's also available in USBWebserver and XAMPP.

I will give some examples to use PHPMyAdmin in combination with HuMo-gen.

TIP: ALWAYS make a backup (it's better to make multiple backups in a regular base) from your database BEFORE making any changes.

TIP: If you use PhpMyAdmin for the first time, browse through the pages and just look at them. In this way you get used to PHPMyAdmin.

For example, select the table "humo_sources", the "structure" will be presented:

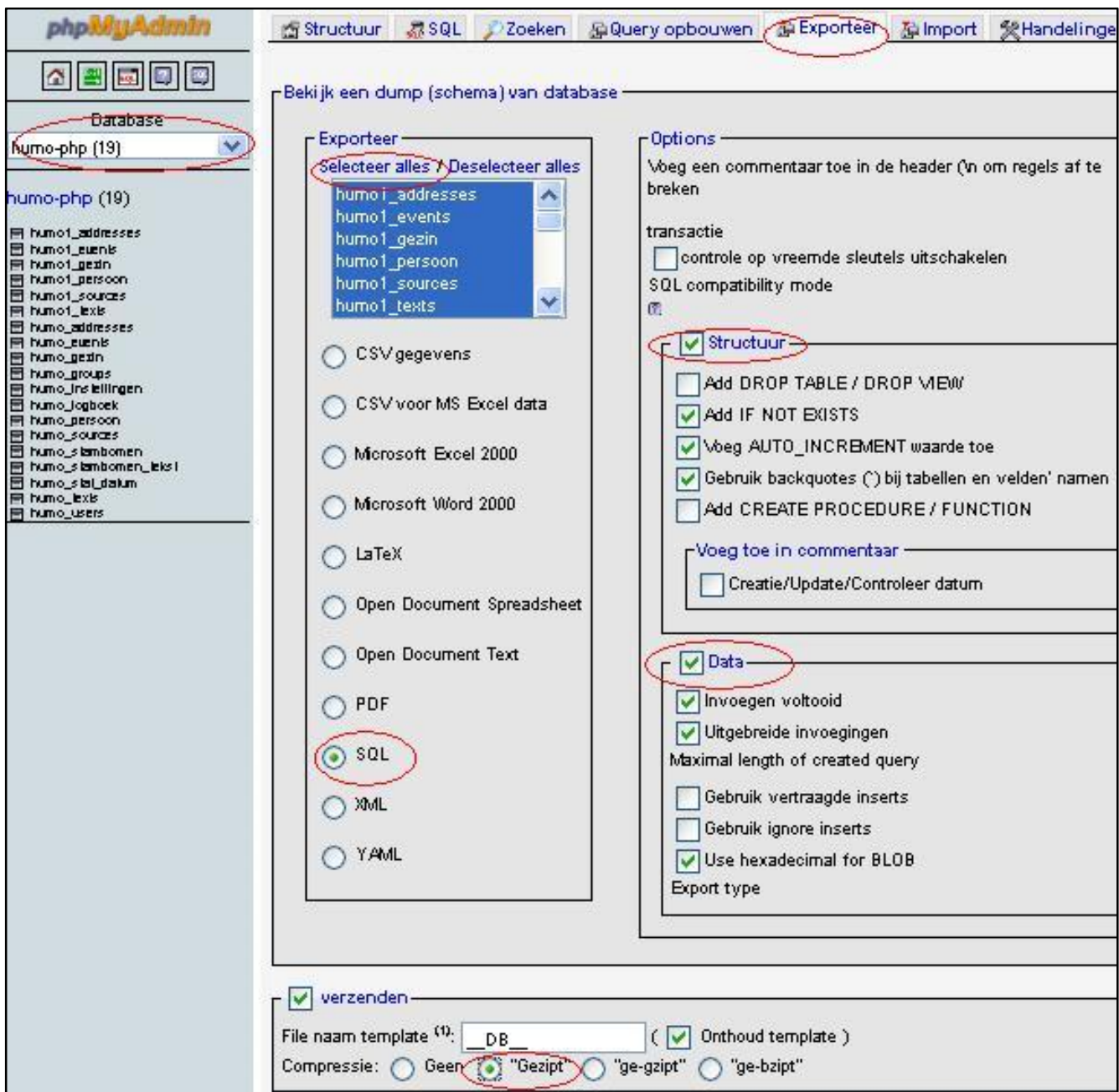


	Veld	Type	Collatie	Attributen	Null	Standaardw
<input type="checkbox"/>	source_id	mediumint(6)		UNSIGNED	Nee	
<input type="checkbox"/>	source_gedcomnr	varchar(20)	latin1_swedish_ci		Ja	NULL
<input type="checkbox"/>	source_order	mediumint(6)			Ja	NULL
<input type="checkbox"/>	source_title	text	latin1_swedish_ci		Ja	NULL
<input type="checkbox"/>	source_abbr	varchar(50)	latin1_swedish_ci		Ja	NULL
<input type="checkbox"/>	source_date	varchar(35)	latin1_swedish_ci		Ja	NULL
<input type="checkbox"/>	source_publ	varchar(150)	latin1_swedish_ci		Ja	NULL
<input type="checkbox"/>	source_place	varchar(50)	latin1_swedish_ci		Ja	NULL
<input type="checkbox"/>	source_refn	varchar(50)	latin1_swedish_ci		Ja	NULL
<input type="checkbox"/>	source_auth	varchar(50)	latin1_swedish_ci		Ja	NULL
<input type="checkbox"/>	source_subj	varchar(50)	latin1_swedish_ci		Ja	NULL
<input type="checkbox"/>	source_item	varchar(30)	latin1_swedish_ci		Ja	NULL
<input type="checkbox"/>	source_kind	varchar(50)	latin1_swedish_ci		Ja	NULL
<input type="checkbox"/>	source_text	text	latin1_swedish_ci		Ja	NULL
<input type="checkbox"/>	source_photo	text	latin1_swedish_ci		Ja	NULL

- 1) If your provider uses PHPMyAdmin, log in
- 2) Select the database
- 3) Click at a table
- 4) At the left side you see the "structure" of a table (fields, sort and size of fields).
- 5) Click at 'explore' to see the contents of the fields. It's possible to browse and change all the data in the family tree.

HuMo-gen database backup

Make a database backup:



1) If your provider provides PHPMYAdmin, login into PhpMyAdmin.

2) Select the database you want to backup

3) Click "Export"

4) Select 'Select all' by tables (normally it is already selected).

TIP: to deselect the statistics table, de-select the table: "humo_stat_datum".

5) Select "zip" and "Start"

6) Save the backup as a file at your pc.

HuMo-gen database restore

Do a database restore:

1) Select all existing database tables, then remove them.

humo-php_test (32)

X

humo1_addresses

humo1_events

humo1_family

humo1_person

humo1_sources

humo1_texts

humo2_addresses

humo2_events

humo2_family

humo2_person

humo2_sources

humo2_texts

humo3_addresses

humo3_events

humo3_family

humo3_person

humo3_sources

humo3_texts

humo_addresses

humo_events

humo_family

humo_groups

humo_location

humo_person

humo_settings

humo_sources

humo_stat_date

humo_texts

humo_trees

humo_tree_texts

humo_users

humo_user_log

<input checked="" type="checkbox"/>	humo3_texts							0	In
<input checked="" type="checkbox"/>	humo_addresses							371	In
<input checked="" type="checkbox"/>	humo_events							1,346	In
<input checked="" type="checkbox"/>	humo_family							901	In
<input checked="" type="checkbox"/>	humo_groups							6	In
<input checked="" type="checkbox"/>	humo_location							243	In
<input checked="" type="checkbox"/>	humo_person							2,371	In
<input checked="" type="checkbox"/>	humo_settings							14	In
<input checked="" type="checkbox"/>	humo_sources							170	In
<input checked="" type="checkbox"/>	humo_stat_date							81	In
<input checked="" type="checkbox"/>	humo_texts							0	In
<input checked="" type="checkbox"/>	humo_trees							5	In
<input checked="" type="checkbox"/>	humo_tree_texts							0	In
<input checked="" type="checkbox"/>	humo_users							3	In
<input checked="" type="checkbox"/>	humo_user_log							21	In
32 tabel(len)		Som						21,850	In

↑

Selecteer alles / Deselecteer alles

Verwijderen

+ Routines

Afdrukken

Data Woordenboek

Nieuwe tabel aanmaken in database humo-php_test

Naam:

Aantal velden:

2) Import the backup of the database (Import, select a file, and press start).

The screenshot shows the phpMyAdmin interface with the 'Import' tab selected. The 'Te importeren bestand' section displays a file selection button 'Bestand kiezen'. The 'Gedeeltelijke import' section has a checked checkbox for interrupting the import. The 'Opmaak van te importeren bestand' section shows 'SQL' as the selected format. The 'Start' button at the bottom right is highlighted.

Change database field size

A database exists from "records" (for instance a person or family) and records have 'fields' (for instance a birth date or birth place). Some fields have a limited size to prevent a very huge database.

In HuMo-gen some fields are limited to 50 or 100 characters, but it's possible to change them. You can do this by following the next steps:

For example the table "humo_sources", the source table.

The screenshot shows the phpMyAdmin interface. On the left, the database 'humo-php (19)' is selected, and the table 'humo_sources' is highlighted. On the right, the structure of the 'humo_sources' table is displayed. The field 'source_subj' is selected, and its properties are shown: Type: VARCHAR, Lengte/Waardes: 50, Collatie: latin1_swedish_ci, Attributen: (empty), Null: null, Standaardwaarde: NULL, Extra: (empty), and Commentaar: (empty). A red circle highlights the 'Lengte/Waardes' field, which is currently set to 50. Below the table structure, there are two footnotes:
1 Als het veld type "enum" of "set" is, voer dan de waardes in volgens dit f
Als u ooit een backslash moet plaatsen ("\") of een enkel aanhalingsteke
2 Voer voor standaard waarden aub een enkele waarde in, zonder backs

- 1) Open PHPMyAdmin
- 2) Select the database
- 3) Select at the left side the table "humo_sources".
- 4) Suppose you want to change the field "source_subj" from 50 into 100 characters: click the pencil ("change") at the line "source_obj"
- 5) A new screen is showed, it's now possible to change 50 into 100, and save this new value.

Securing the db_login.php file (by Yossi Beck)

There are almost unlimited ways by which one can improve the security of programs on the Internet. Huub has devoted much effort and time to the security of HuMo-gen.

I want to suggest an additional and important "do-it-yourself" safety precaution, that could not be included in the default HuMo-gen download because it would complicate the initial installation for less advanced users. Many Internet security sites and web-host do recommend this precaution.

This extra security measure can be easily accomplished by the website administrator.

It concerns the SQL login file **login_db.php** in the include folder. This is the file that has to be altered by anyone who installs HuMo-gen, in order to enter the SQL database name, the SQL database user name and SQL password.

These three parameters contain very sensitive information since anyone who has this information can enter the database. Hackers who manage to get hold of this data can not only wipe out your database, but also plant vicious scripts that can create havoc on the internet.

The danger stems from the fact that the file **db_login.php** is located together with all other HuMo-gen files in the public section of your web server and contains this sensitive information in a non-encrypted form. Regular innocent users will not be able to see this information, but even for a beginner hacker it is no problem to obtain access to the contents of this file.

The solution is as follows. Anyone who owns a domain that is hosted with a webhost can access his files with the user interface offered by the web-host (such as Cpanel) or by means of an FTP program (such as Filezilla).

One of the main folders one will see on the server under the root folder is usually called something like "public", "public-html", "www" or a similar name. Any folders and files that are placed in this folder (such as for example the HuMo-gen folder) are basically visible on the Internet, whether they are meant to be (such as a program like HuMo-gen) or by some minor hacking.

In order to enforce the security of the db_login.php file with its sensitive data, this file has to be moved from its location inside the HuMo-gen folder (that resides in the public - visible - section on the server) to a location on the server that is not visible to the world.

However, we can't just move it, since on booting HuMo-gen searches for this file within its own folder.

The rather simple solution works like this:

1. Move to the include folder and search for the file db_login.php
2. Change the name to db_login.**inc**.php
3. Move this file to a location on the server outside of the public section, for example in the root ("/").
4. Now return to the include map of HuMo-gen and create a new empty file named **db_login.php**
5. In this new file enter the following code:

```
<?php require_once("/home/domainname/db_login.inc.php"); ?>
```

6. Last two things left is to adjust the admin login and mobile login as well.

In the file **admin/index.php** find the line:

```
include_once(CMS_ROOTPATH."include/db_login.php"); // *** Database login ***.
```

Change this line to read:

```
require_once("/home/domainname/db_login.inc.php");
```

In the file **humo_mobile/header.php** find the line:

```
include_once(CMS_ROOTPATH."include/db_login.php"); //Login Database.
```

Change this line to read:

```
require_once("/home/domainname/db_login.inc.php");
```

HuMo-gen a freeware web-based genealogical program.

*Important: in both code examples above **/home/domainname** of course has to be replaced with the location where you placed the db_login.inc.php file. This is not an URL (i.e. not <http://domain.com>, but the relative path on your server to the root map. If you don't know this path you can request it from your webhost.*

That's it!.

Now the sensitive data is no longer accessible from the internet and can only be read on the server by HuMo-gen.

On installation of a new HuMo-gen version Huub anyway recommends not to change the /include/db_login.php file, so nothing will have to be altered to the above procedure.

If in some future version the db_login.php would be substantially altered, you would just have to repeat the above procedure, which should take no more than 5 minutes once you mastered it.

Google index

sept 2010: in the latest beta version of HuMo-gen Google indexing is restricted to the indexing of indexes and families.

Introduction

05 Sept 2010: It turns out that Google uses a large amount of data when indexing HuMo-gen websites. During the last years many reports were added (i.e. ancestor and descendant reports, outline report, fan chart etc) that are all indexed by Google.

In fact, once the person and name indexes of HuMo-gen have been indexed by Google, the reports don't have to be indexed as well. Most often a report offers the same information, just in a different format.

One of the most important reason this issue is addressed at the moment (besides of course the large data transfer) is the following:

Google very much dislikes multiple pages with identical or almost identical content. When Google considers this misuse of their services, the indexing may be restricted and the site might even be removed from the Google index!

Note that Google first indexes a family and then also finds the ancestor and descendant reports (and the rest). In fact the data in those reports is identical as that in the family page.

A quote from the Google website:

<http://www.google.com/support/webmasters/bin/answer.py?answer=66359>

Google tries hard to index and show pages with distinct information. This filtering means, for instance, that if your site has a "regular" and "printer" version of each article, and neither of these is blocked with a noindex meta tag, we'll choose one of them to list. In the rare cases in which Google perceives that duplicate content may be shown with intent to manipulate our rankings and deceive our users, we'll also make appropriate adjustments in the indexing and ranking of the sites involved. As a result, the ranking of the site may suffer, or the site might be removed entirely from the Google index, in which case it will no longer appear in search results.

On the same page another tip from Google:

Minimize similar content: If you have many pages that are similar, consider expanding each page or consolidating the pages into one. For instance, if you have a travel site with separate pages for two cities, but the same information on both pages, you could either merge the pages into one page about both cities or you could expand each page to contain unique content about each city.

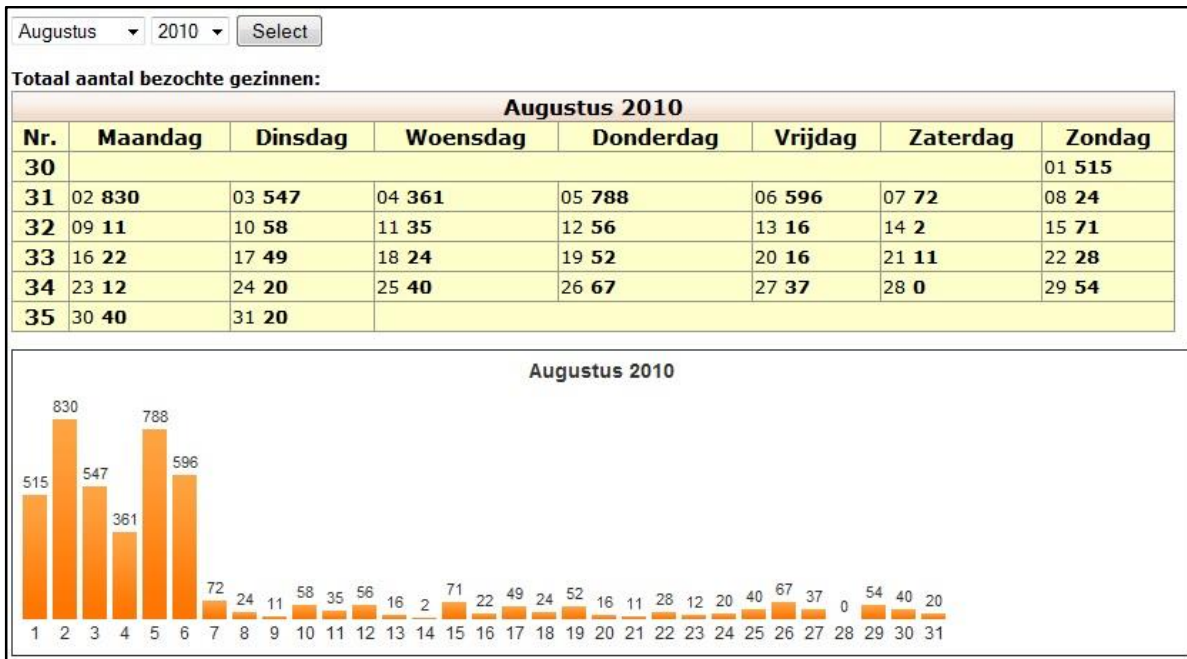
How does Google affect HuMo-gen

1st effect: HuMo-gen Statistics

As it turns out, the statistics in HuMo-gen also count bots and crawlers and these make a substantial part of the statistics!

When I placed a robot.txt file that stopped Google indexing for some time, this had an enormous effect on the data transfer, as one can see in the graph below.

The enormous number of "visited families" turned out to be mainly Google bots (I placed the robots.txt file on 6th of August)...



2nd effect: Large data transfer from your site

In many cases Google create a substantial data transfer. For example on my website with 2000 persons in the family tree: over 1,5 GB per month.

For the time being this can be solved through use of a robots.txt file (as explained further on), or by using the latest beta program.

Use of a robots.txt file

It is possible to stop Google indexing of several reports with a robots.txt file! One can make a good robots.txt file with Google's webmaster help programs.

According to Google (unfortunately): "A robots.txt file is only valid if located in the upper directory and is then applied to all directories on the domain".

To block ALL HuMo-gen pages from Google (adjust the path on the second line):

User-Agent: *

Disallow: /humo-gen/

ROBOTS.TXT (not tested yet, adjust the path on the second and following lines):

User-Agent: *

Disallow: /humo-gen/report_outline.php

Disallow: /humo-gen/report_ancestor.php

Disallow: /humo-gen/fanchart.php

Disallow: /humo-gen/gezin.php

In Google's webmaster help program you can see the results after placing a robots.txt file:



Solutions?

In the latest beta version of HuMo-gen I included a check to detect bots. At the moment this is accomplished with the following script in `$_SERVER['HTTP_USER_AGENT']`:

bot, spider, crawler, curl, Yahoo, Google.

As soon as a bot is detected two things take place:

- 1) The bot is not included in the HuMo-gen statistics.
- 2) On several pages a number of links won't be displayed anymore. At the moment these are:
 - In the indexes, the pop-up menus with a person are disabled.
 - In the family pages the pop-up menus with a person are disabled.
 - In the family pages the buttons 'PDF export' and 'Extended display' are disabled.

The bots won't follow these links anymore.

HuMo-gen known problems

General information

If possible, use a recent version of PHP for HuMo-gen. At this moment (2013) PHP version (5.3) or newer. We use some functions in HuMo-gen that can create problems in older versions (< 5.2). Most providers have an upgrade procedure to a newer PHP version (also use a recent version of MySQL).

Style problems

If there are (CSS) style problems: just reload the HuMo-gen page, or empty cache/ cookies in the browser.

Large gedcom files

With some providers, large Gedcom files may cause problems.

[UPDATE] In 2013 we already did some updates to read larger gedcom files (including faster reading of gedcom files).

There is a time-out setting, but first try to read the gedcom file without timeout setting.

Try the batch processing option, for example: try "10000 records per batch". This will speed up gedcom processing (but will cost lots of server memory...).

If it's not possible to read the gedcom file, you could do the following:

- 1) Install HuMo-gen on a local PC
- 2) Import the Gedcom file
- 3) Export the database (with PhpMyAdmin)
- 4) Import the database with the provider (with PhpMyAdmin)

If all works OK, now it should not be necessary any more to import the gedcom file with the provider!

Read gedcom file

- If special characters like é, ö etc. don't show properly, try another export of the gedcom file. If you used ANSEL, try export to UTF-8 or ANSI.
- If you are reading very large gedcom files, and reading stops, then experiment with the "Batch processing:" settings. If you use a large value, the processing will be faster, BUT it will cost more server memory. Also try a low value for reading.
- If a gedcom file sticks, also try the setting "Show all numbers when processing gedcom (useful when a time-out occurs!)". You will see a long list of gedcom items numbers, but now it's possible to see if gedcom reading stops at the same item every time (contact the HuMo-gen programmer team).

Editor

2012 HuMo-gen version < 4.8.5: I found some small bugs in the HuMo-gen editor. Especially in the "index numbers" by persons. It's a minor fault, but it's better to correct it.

If you are using the HuMo-gen editor, then follow these steps to correct the index numbers:

- 1) Install the newest HuMo-gen version (4.8.5).
- 2) Go to: Administration screen -> Family trees -> Data check.
- 3) Press the "Family tree data check button". The index numbers will be corrected now!

PDF Export

If "Safe Mode" is ON, PDF export doesn't work! It must be switched to OFF. In PHP Version 5.3 safe mode is deprecated, and will be removed in newer versions.

Calculated and estimated dates

In HuMo-gen calculated and estimated dates are always shown as "estimated dates". This is done because several genealogical programs just mix these items in the gedcom export. Maybe because of the unclear official gedcom 5.5.1 descriptions:

CAL = Calculated mathematically, for example, from an event date and age.

EST = Estimated based on an algorithm using some other event date.

"Estimated based on an algorithm using some other event date". Sort of calculated too?

If you want to change the "estimated" text into "calculated" just open file: include/language_date.php and change these lines (multiple times in this file):

```
$date_text=str_replace("CAL", __('estimated'), $date_text);
```

```
$date_text=str_replace("CAL ABT", __('estimated &#177;'), $date_text);
```